



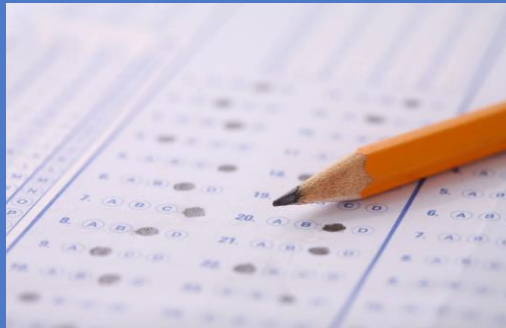
# Student Data: Monitoring Student Growth

Update on Star Data Grades 2 – 8 and SAT's Grade 11

Spring 2023

Why do we give students assessments?

*To assess what kids know and are able to do, to inform instruction, and determine interventions where appropriate.*



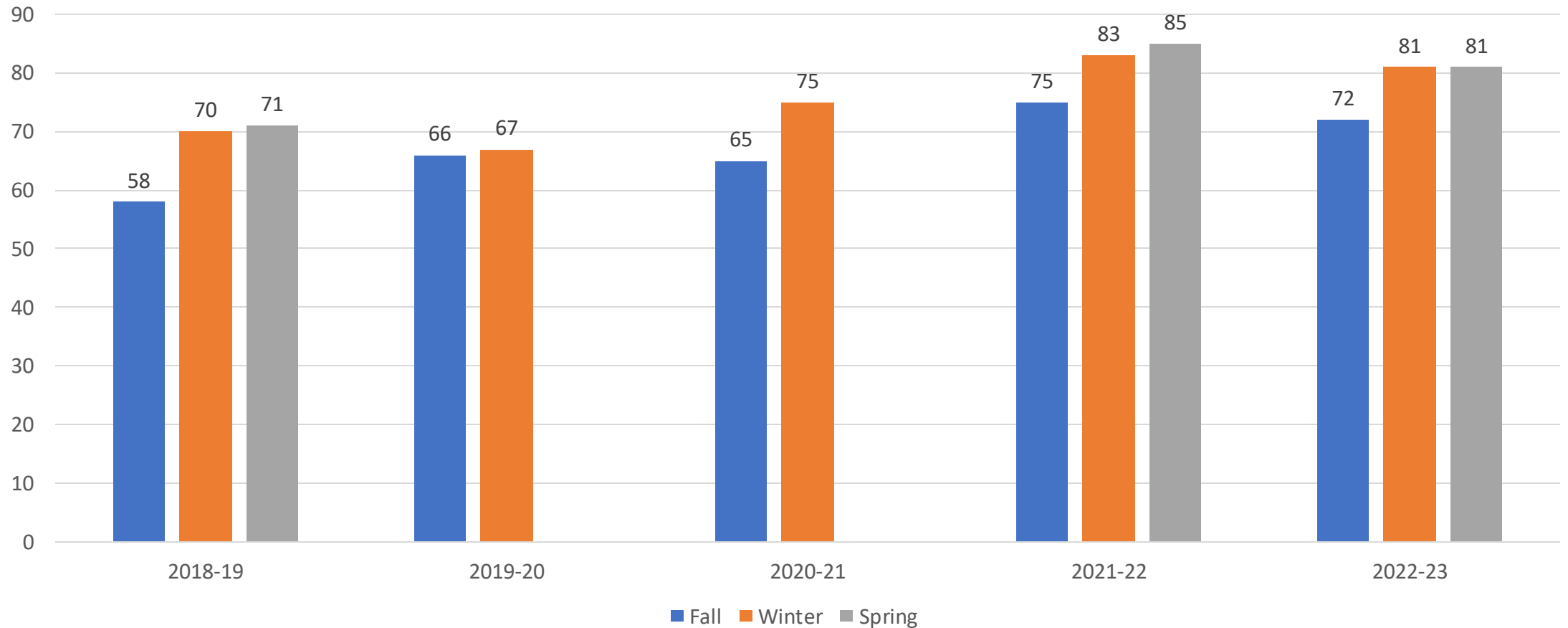
## **STAR**

- Individual student scores are one of several measures that are used to help teachers and families understand student progress.
- Results inform MTSS Teams regarding individual student learning and progress.

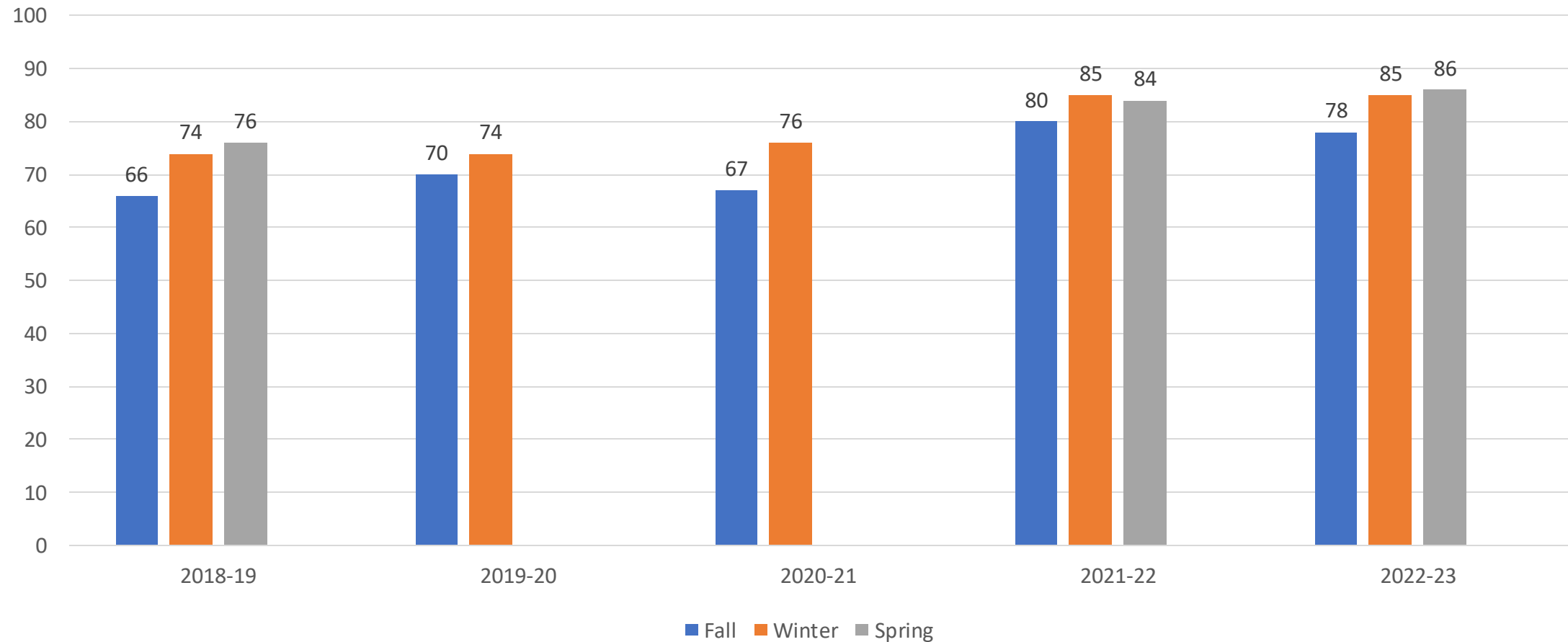
# Reminders about Star

- Fall, Winter, and Spring data includes benchmark adjustments according to expected student growth.
- Star is a computer-adaptive test that continually adjusts questions based on the child's previous response.
- The percentile rank is a norm-referenced score that provides a measure of a student's ability compared to other students in the same grade nationally.
- The Benchmark is set by the district.

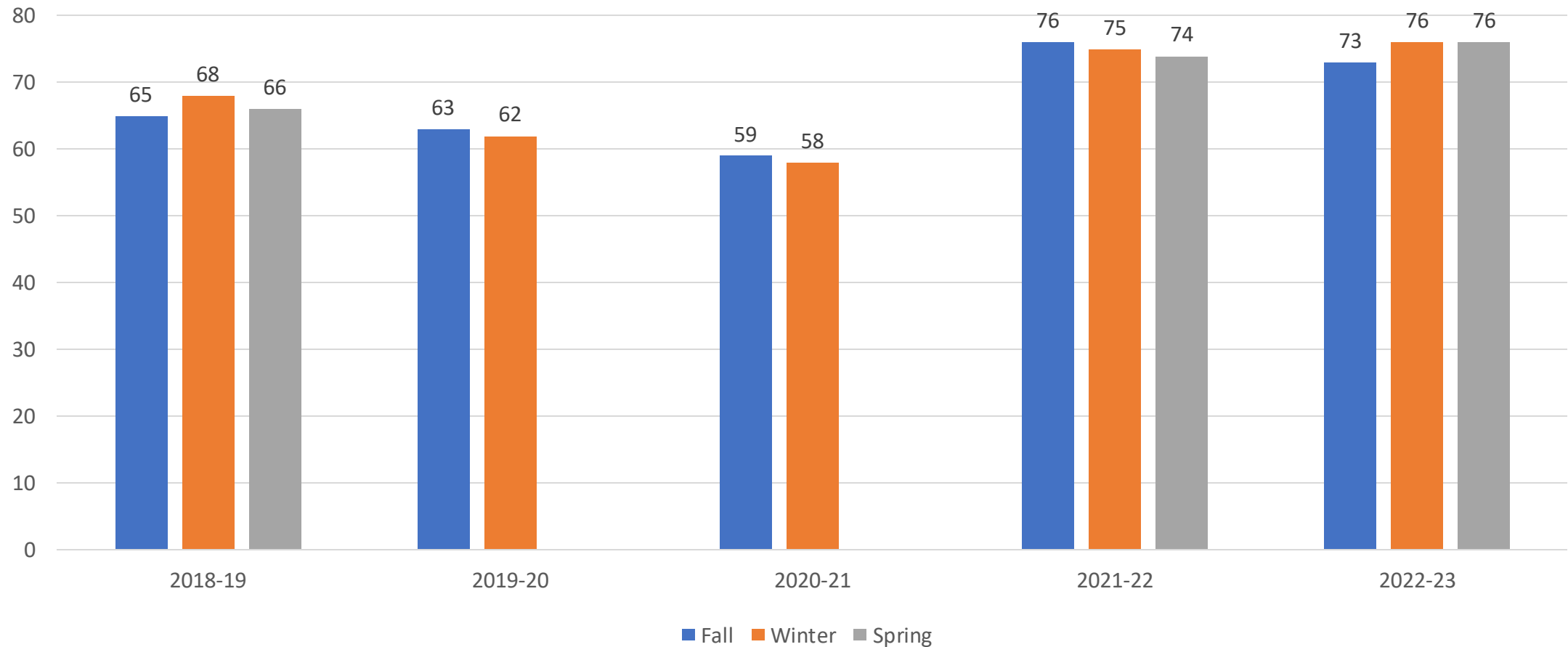
# Elementary School Star Reading: Percent Proficient 2018-2023 (grades 2-4)



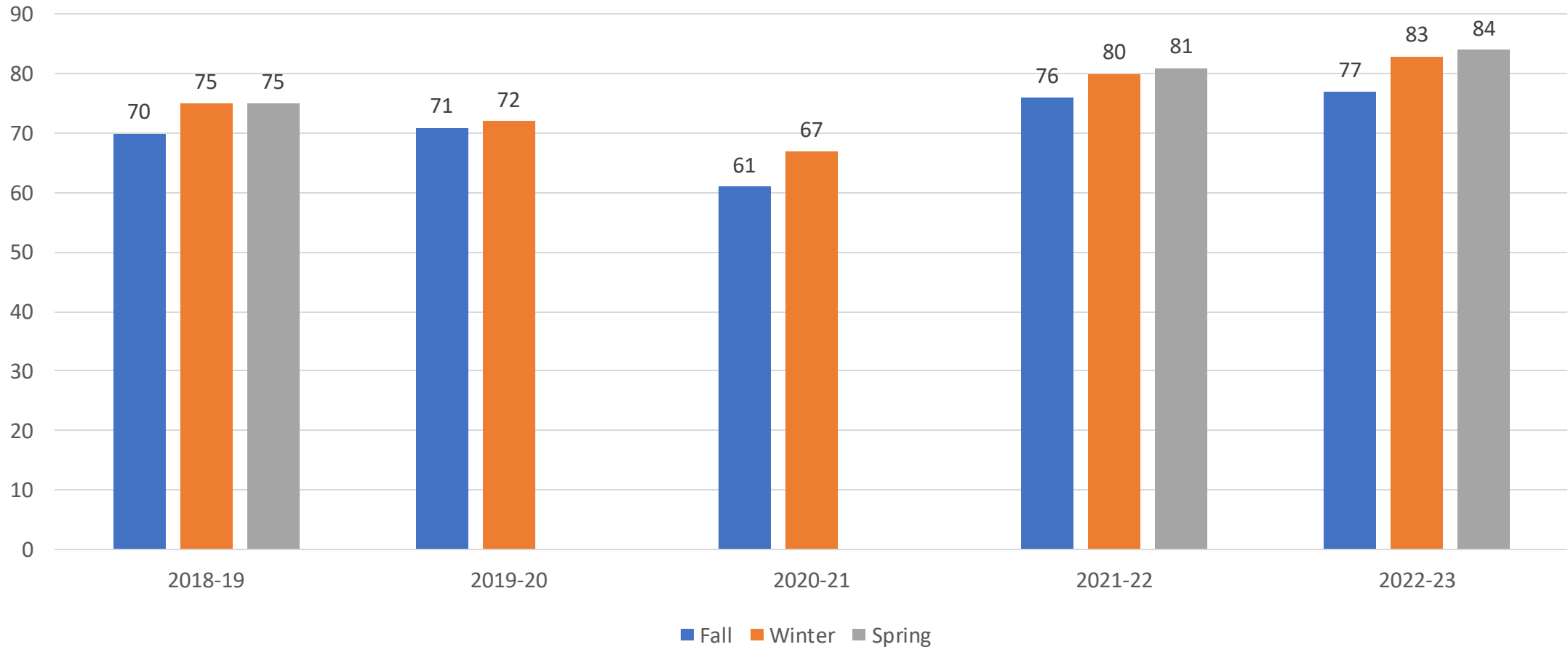
# Elementary School Star Math: Percent Proficient 2018-2023 (grades 2-4)



# Middle School Star Reading: Percent Proficient 2018-2023 (grades 5-8)

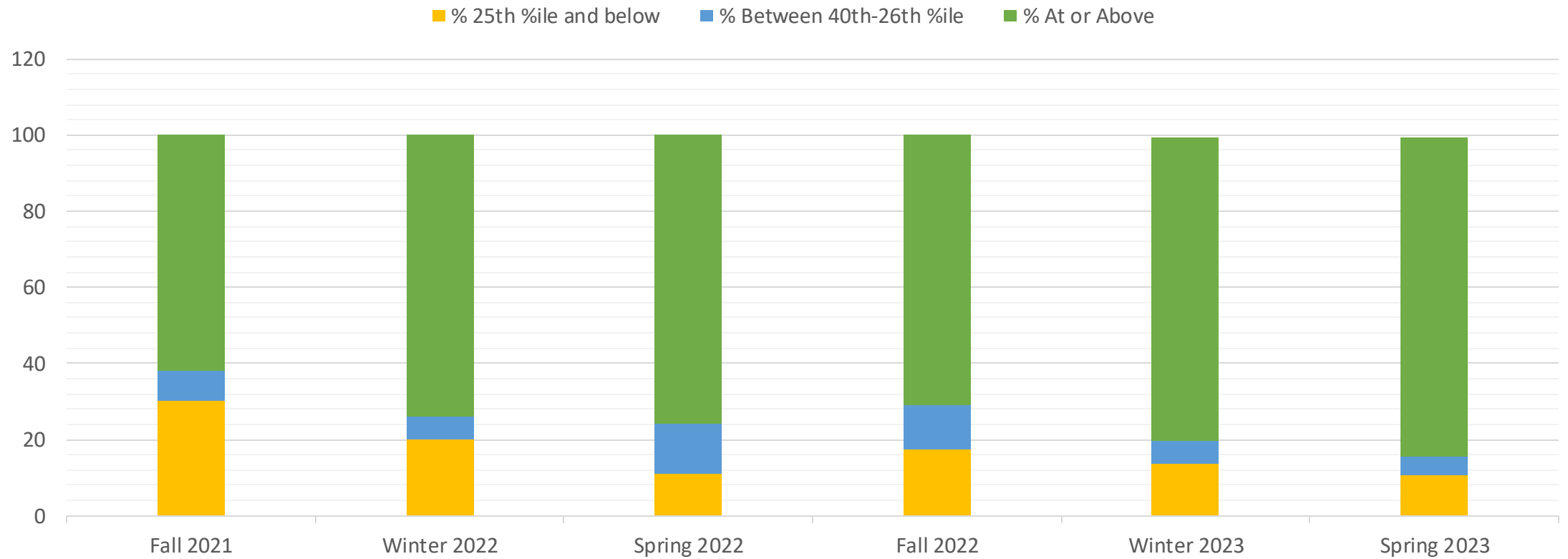


# Middle School Star Math: Percent Proficient 2018-2023 (grades 5-8)



# Class of 2032 Reading – Rising 4<sup>th</sup> grade

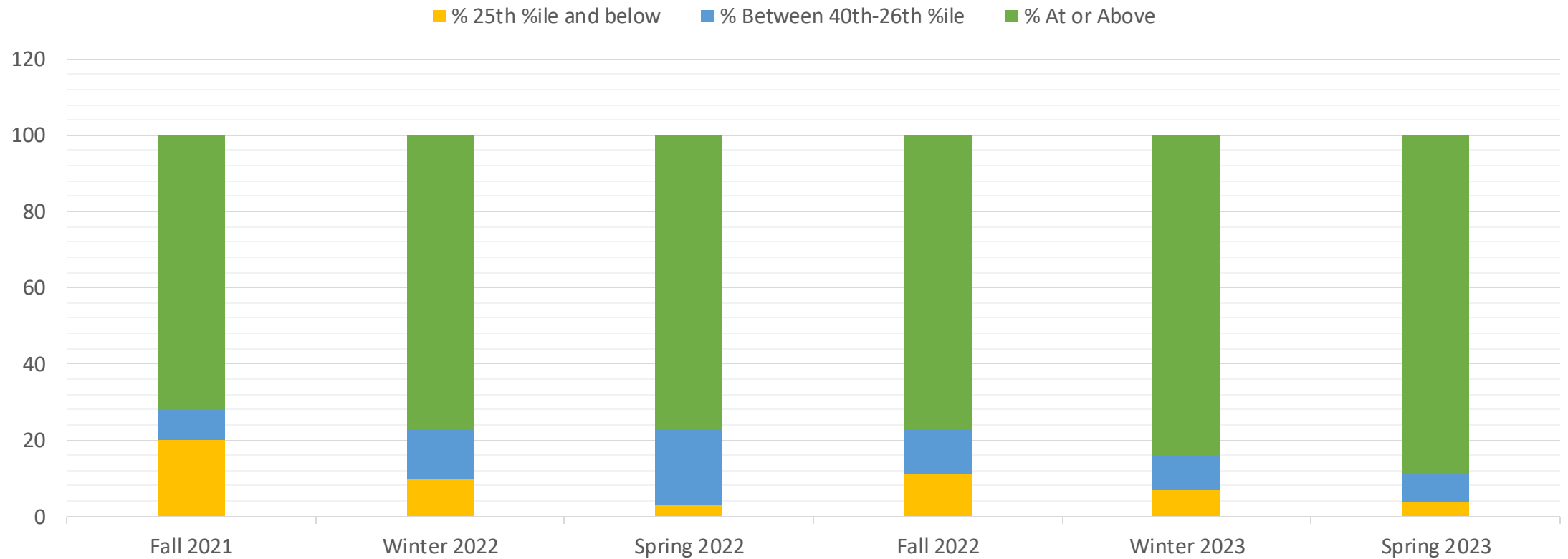
Star Proficiency





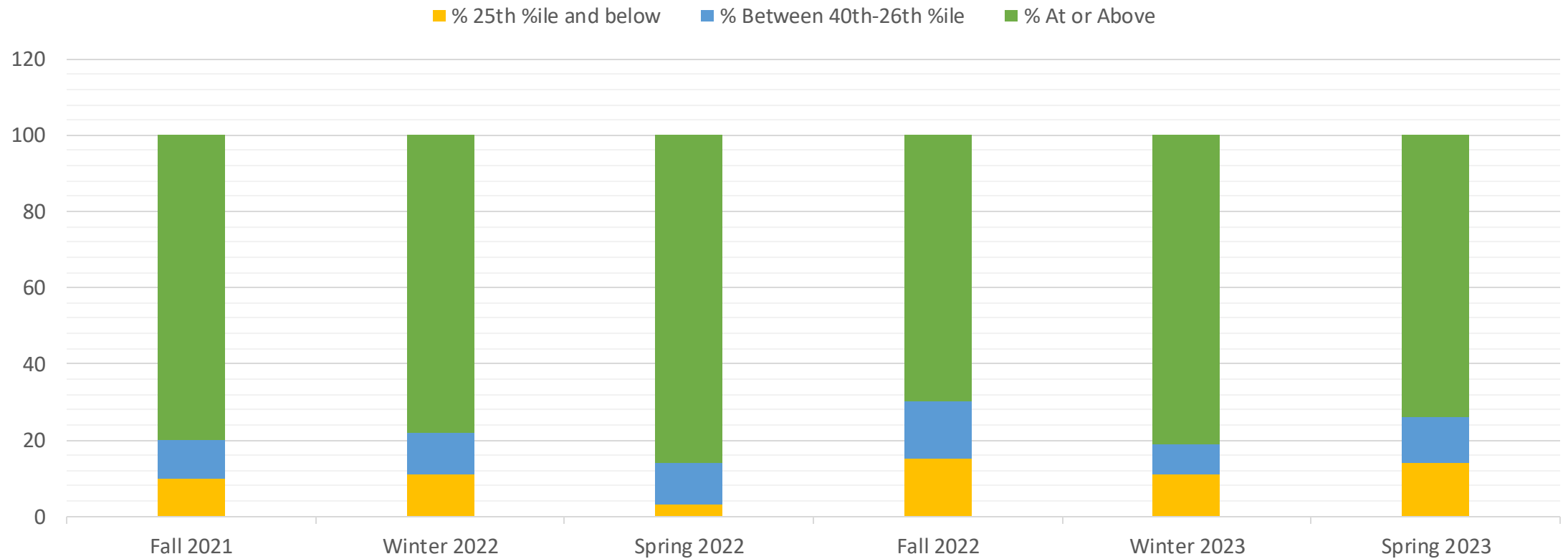
# Class of 2032 Math – Rising 4<sup>th</sup> grade

Star Proficiency



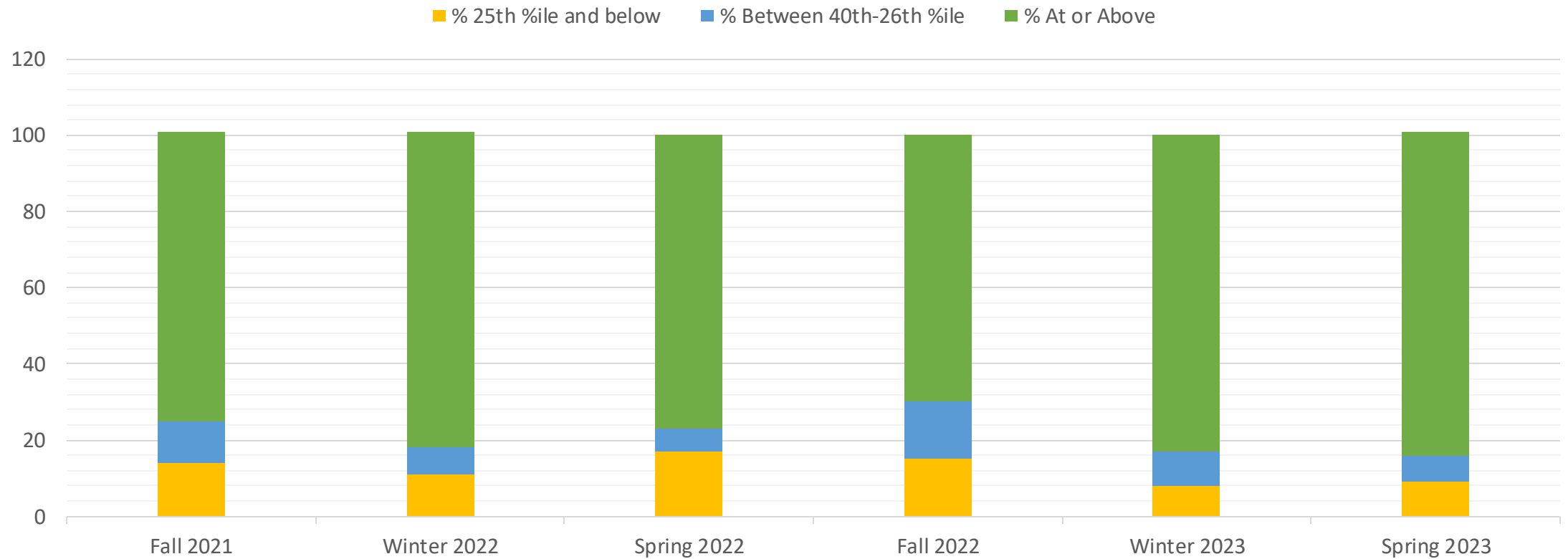
# Class of 2029 Reading – Rising 7<sup>th</sup> grade

Star Proficiency



# Class of 2029 Math – Rising 7<sup>th</sup> grade

Star Proficiency

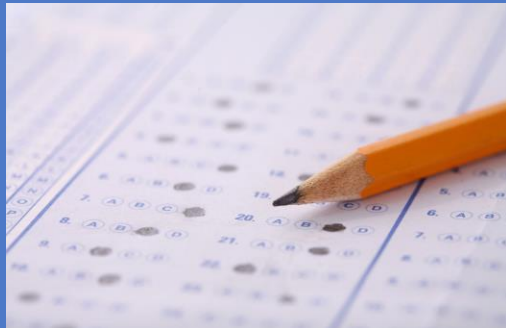


Why do we give students the SAT assessment?

“Predicts college readiness.”

The *SAT* is the NH State Assessment for all juniors.

More than 1,400 four-year colleges and universities are test optional.



## SAT

- Digital Test
- Multiple Choice
- Scores range from 400-1600
- Two section scores: (1) Reading and Writing and (2) Math  
Reading and Writing is merged into one score
- SAT is a “normed” exam  
Raw scores translate into scaled scores that fall along the standard bell curve distribution
- Starting in 2024 the test will be:
  - Shorter in length (from three to two hours)
  - Shorter reading passages and more access to calculator

# SAT Score Comparison 2017 - 2022

Year	Reading and Writing			Math		
	ORHS	NH	National	ORHS	NH	National
2023	557	506	488	557	488	467
2022	557	512	490	561	494	472
2021	577	531	528	566	514	523
2020	577	528	523	567	512	508
2019	580	508	479	564	516	489
2018	573	535	536	578	528	531
2017	582	524	538	588	511	533

# Action Items/Goals for 2023-2024

Continue Multi Tiered System of Supports

Continue to implement Foundations as part of literacy instruction

Continue to explore progress monitoring tools for mathematics

Reassemble District MTSS Team for Evaluation of District Goals and Systems

Analyze MS and HS Reading/Writing data more fully

Continue to implement individualized interventions when appropriate

Work with students on sustaining focus, executive skills, and school wide expectations

Implement Eureka Squared Updated Eureka Math Program (grades K-5)

Proactive use of "FLEX"ible time at middle and high school

