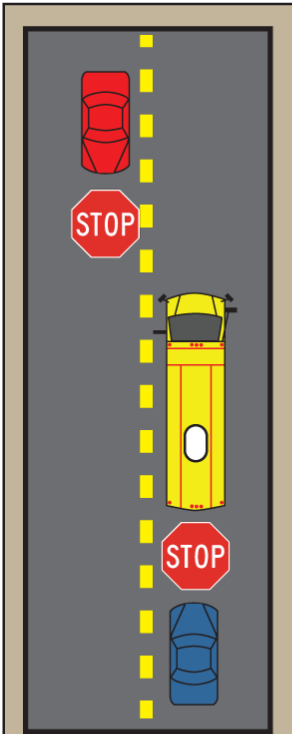
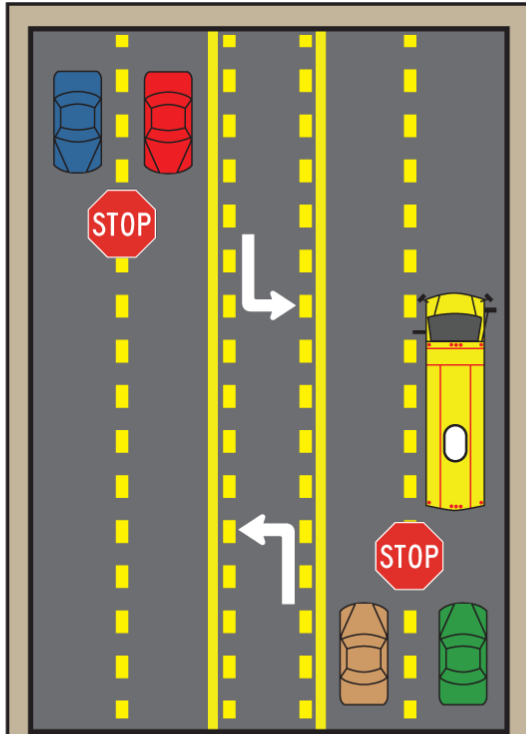


Proper Stopping for Vehicles

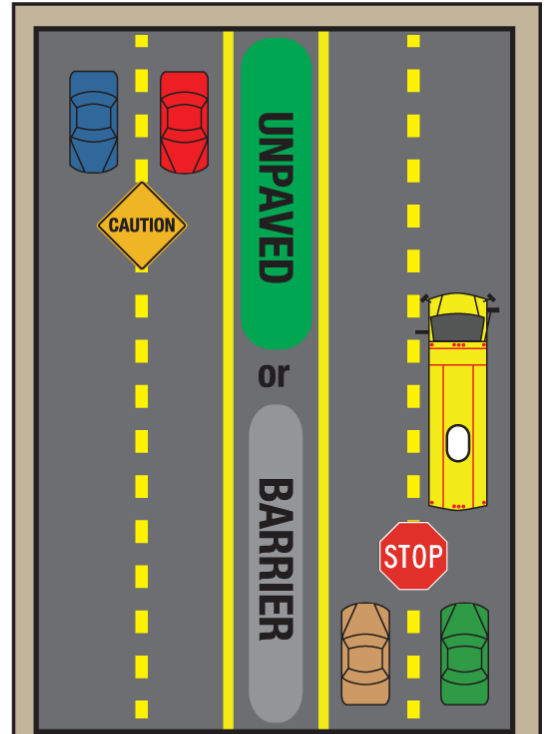
when School Bus has Reds on and Stop out.



TWO-LANE:
Vehicles traveling
in both directions
MUST stop.



MULTI-LANE PAVED ACROSS:
Vehicles traveling in both
directions **MUST** stop.



DIVIDED HIGHWAY:
[Unpaved space (Min. 5ft.) OR any raised median or physical barrier.]
Vehicles behind bus **MUST** stop.
Vehicles traveling in the opposite
direction proceed with caution.