

ECOLOGICAL FOOTPRINT REPORT

Period: July 1 2011 – June 31, 2012

April 2013

Oyster River Cooperative School District

Prepared by: Nicole D'Alessio
University of New Hampshire, 2013
Environmental and Resource Economics



Table of Contents

| | |
|--|----|
| INTRODUCTION..... | 2 |
| | |
| PART 1. TOTAL MEASUREMENTS FOR SOLID WASTE AND RECYCLING, TRANSPORTATION, WATER CONSUMPTION, ENERGY, ELECTRICITY, AND PAPER CONSUMPTION..... | 4 |
| Totals..... | 5 |
| Solid Waste and Recycling..... | 6 |
| Transportation..... | 7 |
| Water Consumption..... | 9 |
| Energy..... | 10 |
| Electricity..... | 12 |
| Paper Consumption..... | 14 |
| | |
| PART II: INDIVIDUAL SCHOOL ASSESSMENTS..... | 15 |
| Mast Way Elementary..... | 16 |
| Moharimet Elementary..... | 19 |
| Middle School..... | 23 |
| High School..... | 27 |
| | |
| PART III. NOTED IMPROVEMENTS, RECOMMENDATIONS, APPENDICES..... | 32 |
| Noted Improvements..... | 33 |
| Recommendations..... | 33 |
| Appendix A: Calculations..... | 34 |
| Appendix B: Final Scorecard..... | 35 |

Ecological Footprint Report

Period: July 1 2011 – June 31, 2012

April 2013

Oyster River Cooperative School District

INTRODUCTION

The Sustainability Committee

The Oyster River Cooperative School District’s Sustainability Committee, established in March 2011, serves to facilitate a sustainability forum regarding the creation, planning and implementation of long-term sustainability initiatives within the Oyster River Cooperative School District. Aligning itself with the five principles of sustainability: renewability, substitution, interdependence, adaptability, and intuitional commitment, the Committee focuses its efforts in areas related to: food, energy, transportation, school curriculum and community outreach. Since its establishment, the Sustainability Committee has kicked off “No Idling” bus campaigns, Biodiesel Bus conversions, created school gardens, introduced local foods to lunchrooms, provided for the conduction of energy audits, and facilitated community outreach events, among countless other ongoing efforts. This March, the Committee’s request for Green Teams was passed, allowing for even more effective sustainability initiatives in the future.

The ORCSD consists of the following schools:

Mast Way Elementary School

Moharimet Elementary School

Oyster River Middle School

Oyster River High School

Purpose of this Document

The purpose of this document is for ORCSD Sustainability Committee and community members to maintain a yearly analysis of the district’s ecological footprint by benchmarking the following sectors:

Solid Waste and Recycling

Water Consumption

Electricity

Transportation

Paper Consumption

Energy

The Oyster River Sustainability Committee serves as a community change agent, dedicated to planning long-term sustainability initiatives that engage members of the Oyster River Cooperative School District Community and the towns of Durham, Lee and Madbury.

Layout of this Document

This document is divided into three sections. Part I represents the total measurements for the six sectors in terms of usage, costs, and metric tons of carbon dioxide equivalent emitted (MTCO₂E). The Document aims to cover the entire Fiscal Year 2011-2012, but also includes additional benchmark figures from FY 2012-2013 where possible. Totals were computed for the entire district and compared to previous fiscal school years where applicable. Part II serves as an individual school assessment that incorporates each school across the six sectors while comparing to previous fiscal years where applicable. Part III highlights impactful changes and improvements in sustainability since the prior fiscal year and concludes with recommendations for decreasing ORCSD'S ecological footprint in the future with additional recommendations for future Ecological Footprint Reports. Appendices containing consolidated charts with footprint measurements as well as calculation tools are included at the end of the report.



PART 1. TOTAL MEASUREMENTS FOR SOLID WASTE AND
RECYCLING, TRANSPORTATION, WATER CONSUMPTION,
ENERGY, ELECTRICITY, AND PAPER CONSUMPTION

Totals
Total Costs

| Costs | | | | | | |
|----------------------|-------------|--------------|------------|-------------|--------------|--------------|
| | Waste | Fleet | Water | Energy | | Electricity |
| | | | | Propane | Natural Gas | |
| Mast Way | \$6,321.11 | - | - | \$43,562.17 | - | \$21,434.26 |
| Moharimet | \$6,409.84 | - | - | \$24,137.57 | - | \$25,697 |
| Middle School | \$5,425.14 | - | \$3,221.40 | - | \$61,389 | \$45,697 |
| High School | \$7,484.66 | - | \$3,638.00 | - | \$106,407.35 | \$200,359.71 |
| Total | \$25,640.75 | \$182,084.90 | \$6,859.40 | \$67,699.74 | \$167,796.40 | \$293,187.97 |

| | |
|-------------------------|---------------------|
| Total Cost | \$743,269.20 |
| Cost Per Student | \$371.63 |

MTCO₂E

| MTCO2E | | | | |
|----------------------|-------|---------|-------------|-------------|
| | Fleet | Energy | | Electricity |
| | | Propane | Natural Gas | |
| Mast Way | | 157.19 | | 173 |
| Moharimet | | 90.43 | | 160 |
| Middle School | | | 216 | 445 |
| High School | | | 972 | 1,106 |
| Total | 533 | 247.62 | 1,188 | 1,885 |

| | |
|---------------------------|-----------------|
| Total MTCO2E | 3,853.62 |
| MTCO2E Per Student | 1.926 |

That's the equivalent of the amount of carbon sequestered by 50 tree seedlings per student each year!

Solid Waste and Recycling

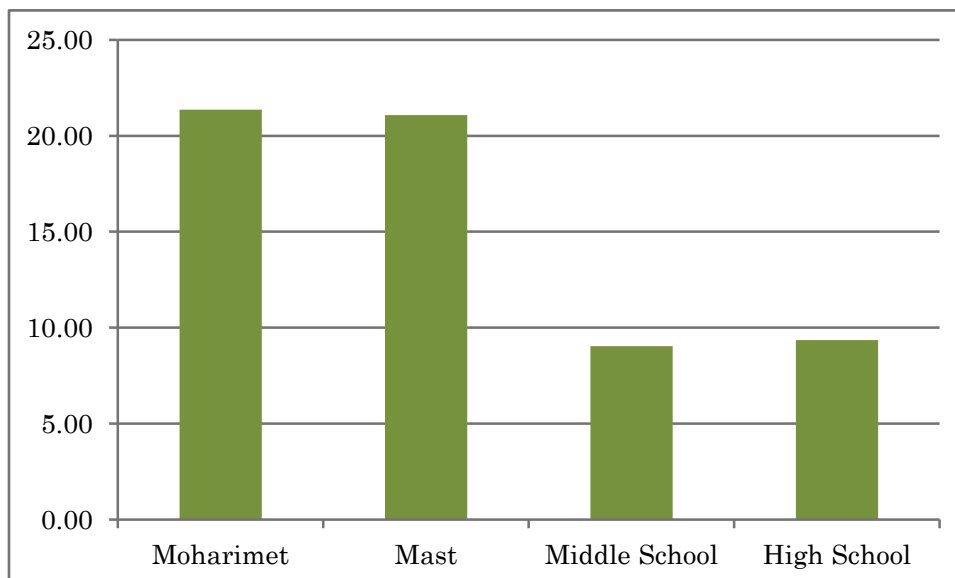
Total Costs for all Schools

| School | Solid Waste & Recycling Cost |
|----------------------|------------------------------|
| Mast Way | \$6,321.11 |
| Morharimet | \$6,409.84 |
| Middle School | \$5,425.14 |
| High School | \$7,484.66 |
| Total | \$25,640.75 |

As of FY 2012-2013, the structure of the waste disposal system has shifted, and the changes are detailed below.

| School | Single Stream | Composting | Trash | Cardboard | Monthly Cost | Yearly Cost | ~Yearly Expenditure/Student |
|---------------|---------------|------------|------------|-----------|--------------|-------------|-----------------------------|
| High School | \$76 | \$100.00 | \$660/haul | \$44.50 | \$220.50 | \$8,361.60 | \$10.45 |
| Middle School | \$76 | \$100.00 | \$180.00 | \$44.50 | \$400.50 | \$4,806.00 | \$8.01 |
| Moharimet | \$76 | \$100.00 | \$180.00 | | \$356.00 | \$4,271.50 | \$14.23 |
| Mast Way | \$76 | \$100.00 | \$180.00 | | \$356.00 | \$4,271.50 | \$14.23 |
| Total | | | | | \$1,333.00 | \$21,710.60 | \$10.85 |

Breakdown of Costs Per Student by School



Transportation Fleet

Totals: All Variables for the Transportation Fleet

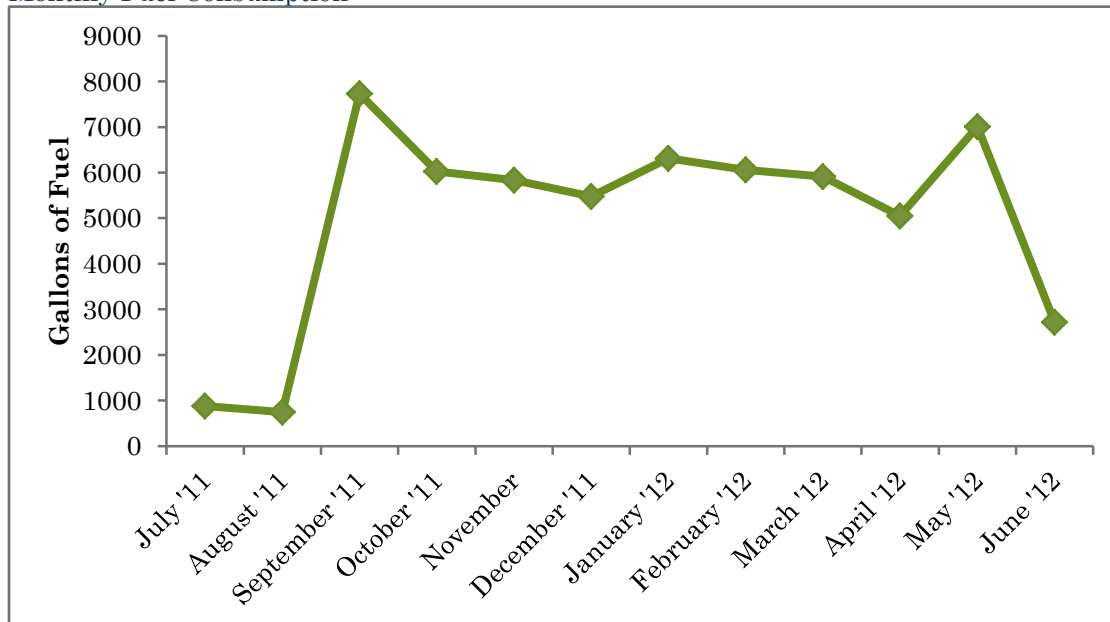
| | Totals from July 2011 - June 2012 | |
|--------------------------------|-----------------------------------|-----------------|
| | Total | Average Per Bus |
| <i>Miles Driven</i> | 506,588 | 14071 |
| <i>Miles Per Gallon</i> | 12,664 | 9.1 |
| <i>Fuel Consumed (Gallons)</i> | 60,002 | 1666.72 |
| <i>Maintenance (\$)</i> | 60,293.90 | 1722.68 |
| <i>Repairs (\$)</i> | 97,589 | 2710.81 |
| <i>Body Work (\$)</i> | 23,660 | 657.21 |
| <i>Tires (\$)</i> | 2,184.40 | 60.68 |
| <i>Filters</i> | 1,311.90 | 36.44 |
| <i>Total Costs</i> | \$182,084.90 | \$5187.82 |

Total Carbon Dioxide Emissions

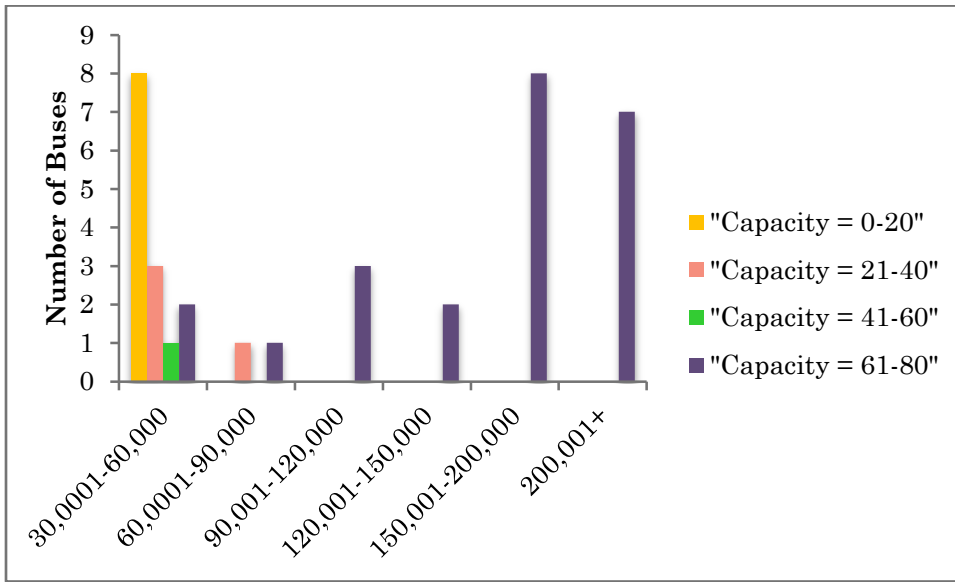
| Fuel Consumed (Gallons) | MTCO ₂ E |
|-------------------------|---------------------|
| 60,002 | 533 |

| Fuel Consumed Per Student (Gallons) | MTCO ₂ E Per Student |
|-------------------------------------|---------------------------------|
| 30 | 0.267 |

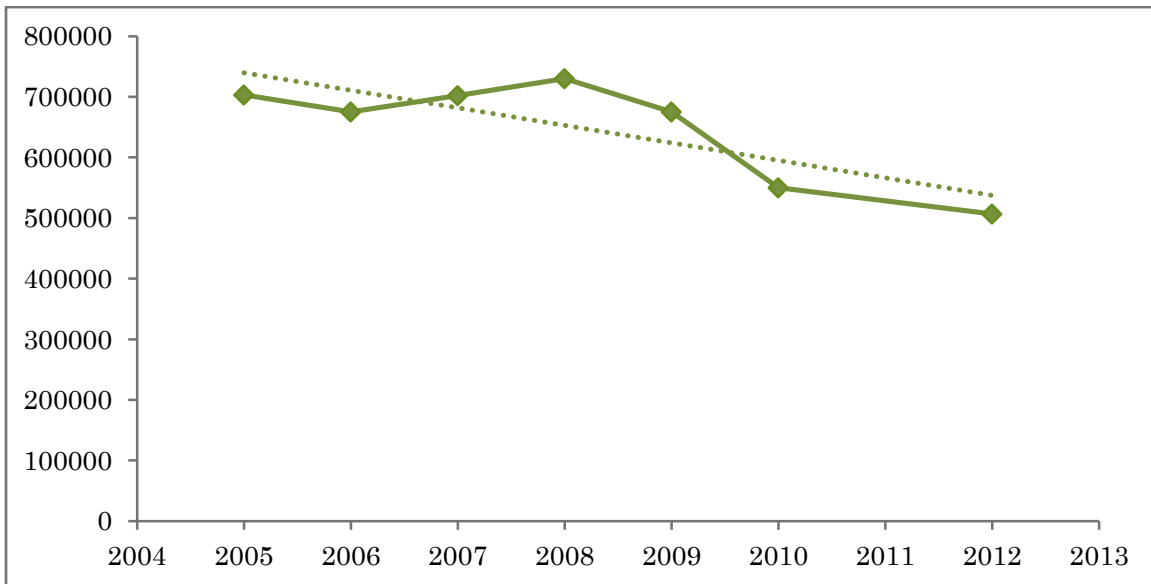
Monthly Fuel Consumption



Annual Mileage by Bus Capacity: Frequencies



Annual Comparison of Miles Driven by the Fleet



Water Consumption

Omitted Data

Of the four schools in the Oyster River district, Mast Way and Moharimet Elementary schools are omitted from this report. Due to the fact that the two elementary schools water sources are wells, the only facilities included in this report are the High School and Middle School.

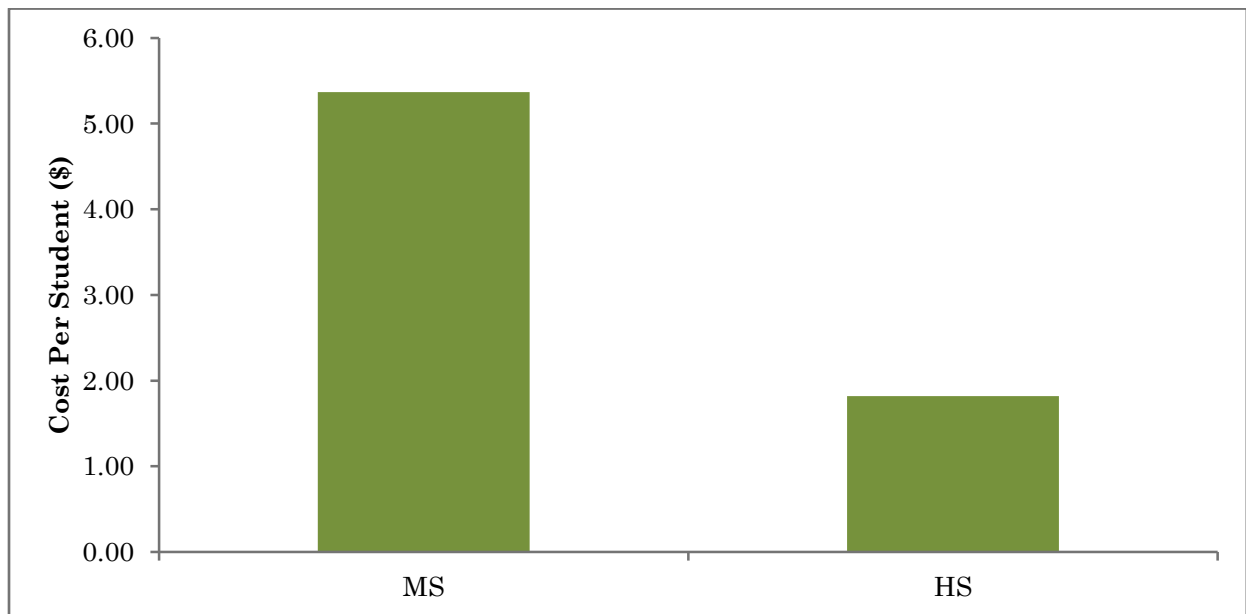
Read Data and Usage

| School | Read Date and Usage | | | | |
|----------------------|---------------------|---------------|-----------|---------------|-----------|
| | March '12 | September '11 | March '11 | September '10 | April '10 |
| High School | 59,968 | 52,325 | 22,017 | 50,344 | 47,538 |
| Middle School | 50,000 | 41,000 | 62,000 | 29,000 | 57,000 |
| Total Usage | 109,968 | 93,325 | 84,017 | 79,334 | 104,538 |

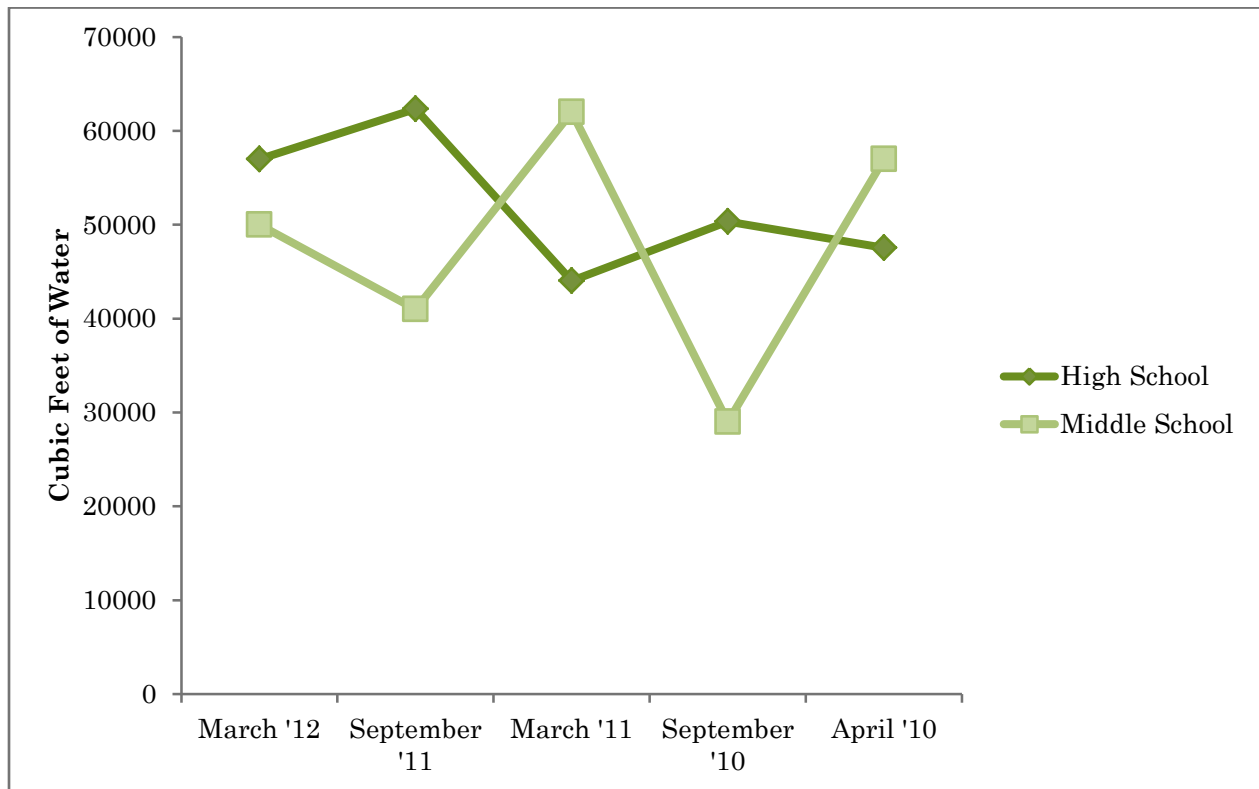
Impact of Hydration Stations on Water Bottle Consumption

| School | Number of Units | Water Bottles Saved |
|---------------|-----------------|---------------------|
| High School | 2 | 26,647 |
| Middle School | 2 | 41,722 |
| Mast Way | 1 | 5,848 |
| Moharimet | 1 | 11,983 |

Breakdown of Water Costs per Student by School



Monthly Water and Sewer Consumption



Cost of Water and Sewage

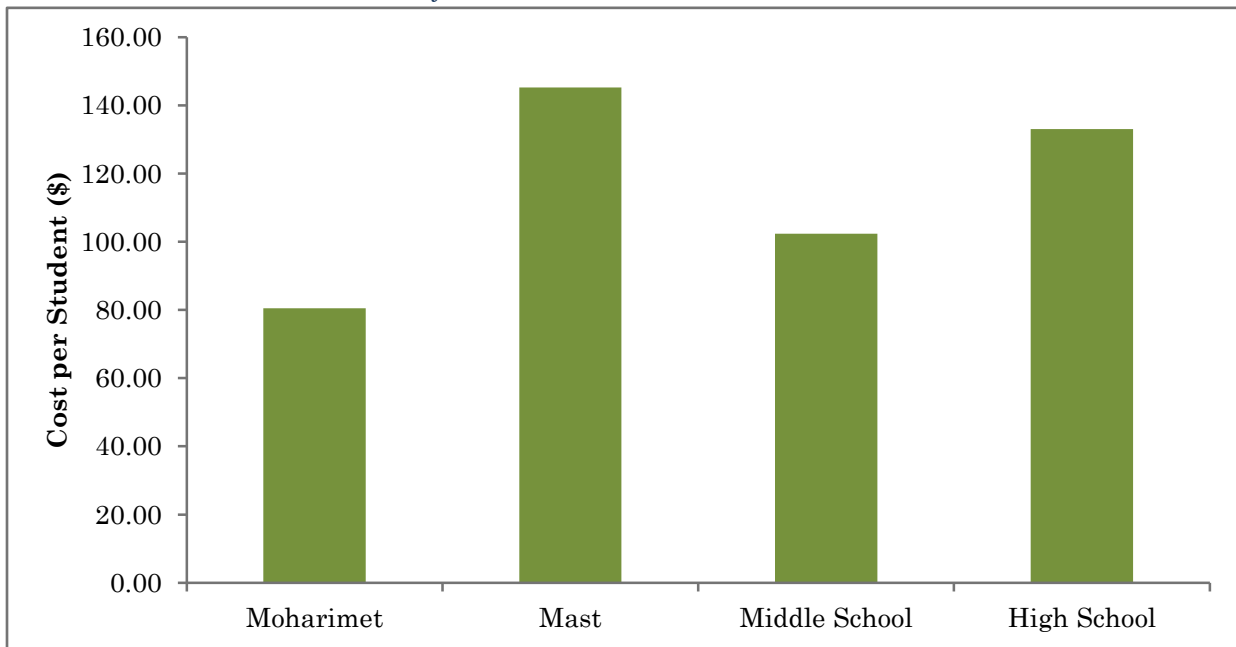
| | Water and Sewage Use (Cubic Feet) | Cost |
|----------------------|--------------------------------------|------------|
| High School | 104,232.80 | \$3,638.00 |
| Middle School | 91,000 | \$3,221.40 |

Energy

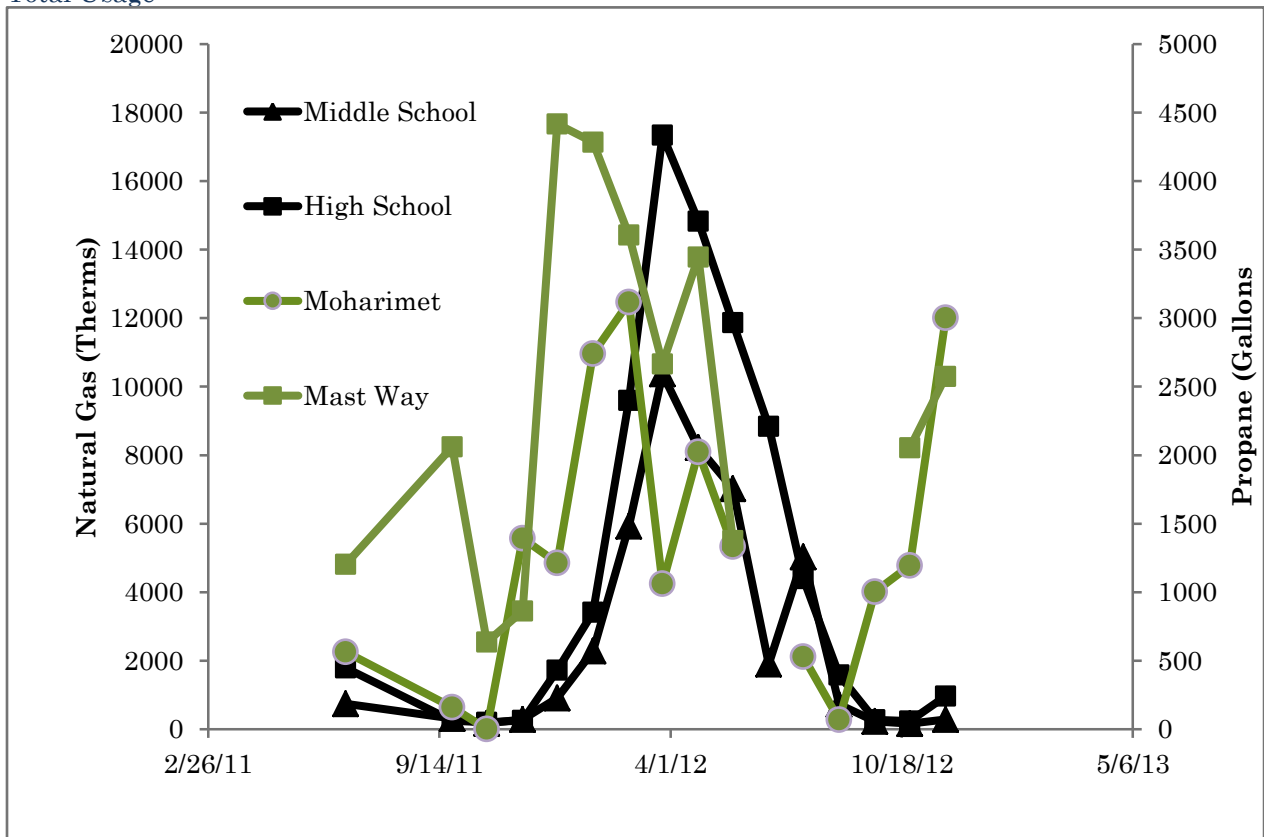
Total Cost

| School | Energy Type | Total | Cost | MTCO ₂ E |
|----------------------|----------------------|-----------|--------------|---------------------|
| Mast Way | Propane (Gallons) | 24,562 | \$43,562.17 | 187.19 |
| Moharimet | Propane (Gallons) | 13,602.60 | \$23,410.52 | 90.43 |
| Middle School | Natural Gas (Therms) | 43,154.49 | \$55,930.57 | 216 |
| High School | Natural Gas (Therms) | 74,327.29 | \$106,407.35 | 972 |
| Total | | 112,491 | \$173,380.04 | 1,465.62 |

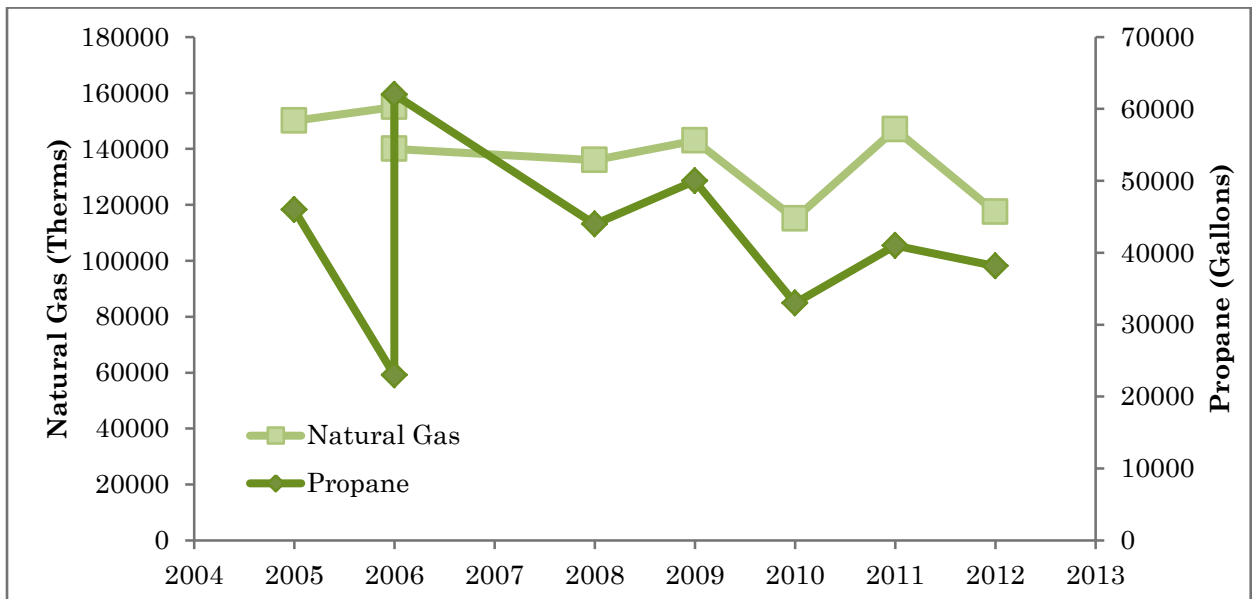
Breakdown of Costs Per Student by School



Total Usage



Annual Comparison of Usage

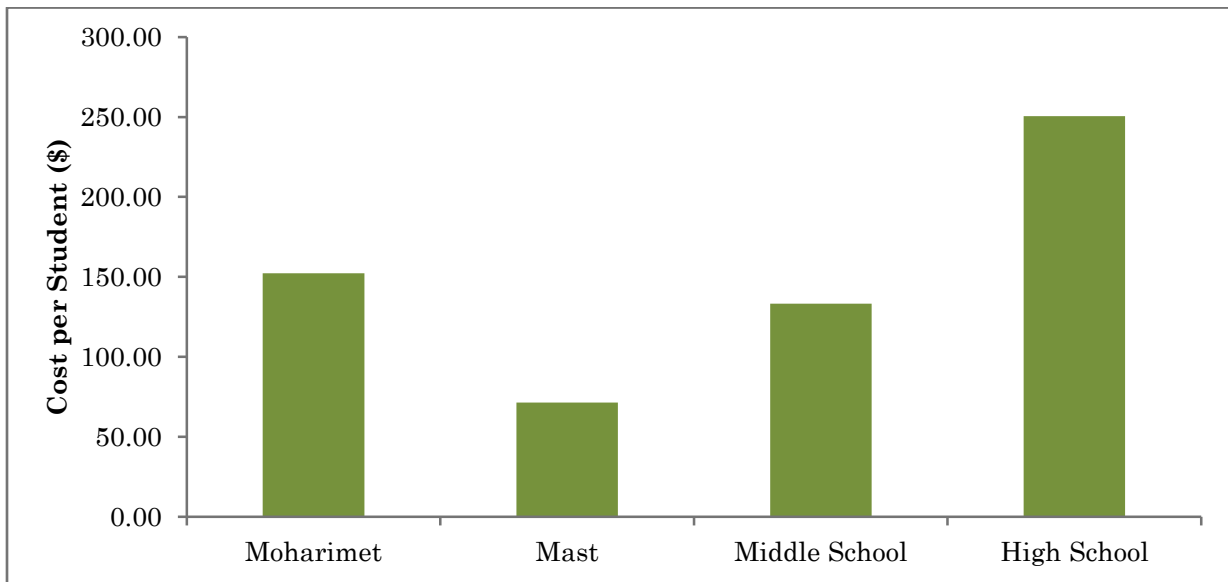


Electricity

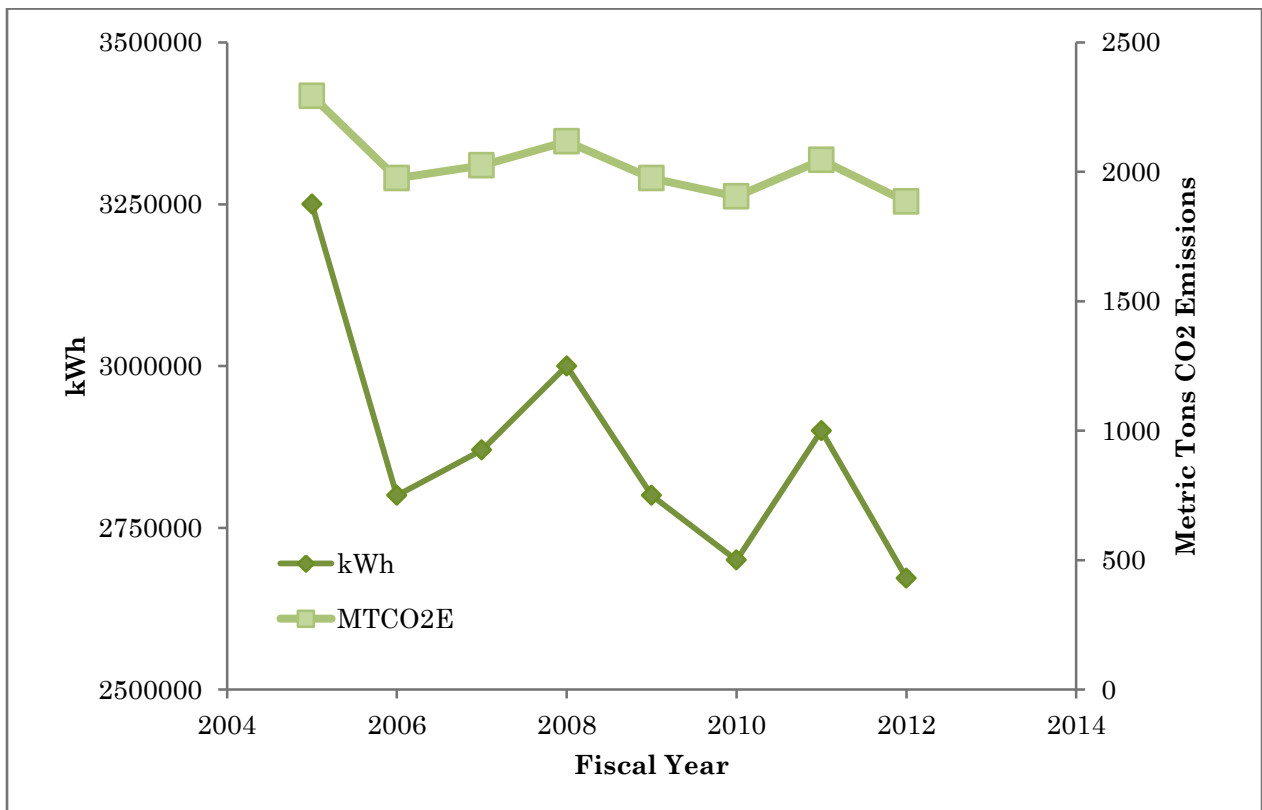
Total Costs and Usage

| School | Cost | kWh | MTCO2E |
|---------------|--------------|-----------|--------|
| High School | \$21,434.26 | 1,568,121 | 1,106 |
| Middle School | \$25,697.00 | 631,200 | 445 |
| Mast Way | \$45,697.00 | 245,360 | 173 |
| Moharimet | \$200,359.71 | 227,368 | 160 |
| All Schools | \$293,187.97 | 2,672,049 | 1,885 |

Breakdown of Costs Per Student by School



Annual Comparison of Use



Paper Consumption

Overall paper consumption within the district is difficult to track as the following figures do not include amounts used by students or any amount used in classrooms that the district does not purchase. For the purpose of the Report and for comparison in future years, paper amounts purchased by the district will serve as a proxy for overall paper consumption in all schools. The following chart displays paper purchases (reams) for the district in FY 2011-2012.

| | White | Colored | Total/Period |
|---------------------------|-------|---------|--------------|
| July-September | 1,300 | 250 | 1,550 |
| September-November | 1,000 | 200 | 1,200 |
| December-March | 2,410 | 420 | 2,830 |
| April-June | 1,390 | 140 | 1,530 |
| Total | 6,100 | 1,010 | 7,110 |

| Cost Differences | Reams | Price | Total Cost |
|---------------------------------|-------|--------|-------------|
| Recycled White Paper | 6,100 | \$4.40 | \$26,840.00 |
| Non-Recycled White Paper | 6,100 | \$2.52 | \$15,372.00 |

Added cost of switching to recycled paper in the district would be \$11,468.00/year.



PART II: INDIVIDUAL SCHOOL ASSESSMENTS

MAST WAY ELEMENTARY

Solid Waste and Recycling

| Cost | Percent Change from Previous Year |
|------------|-----------------------------------|
| \$6,321.11 | 11.9% |

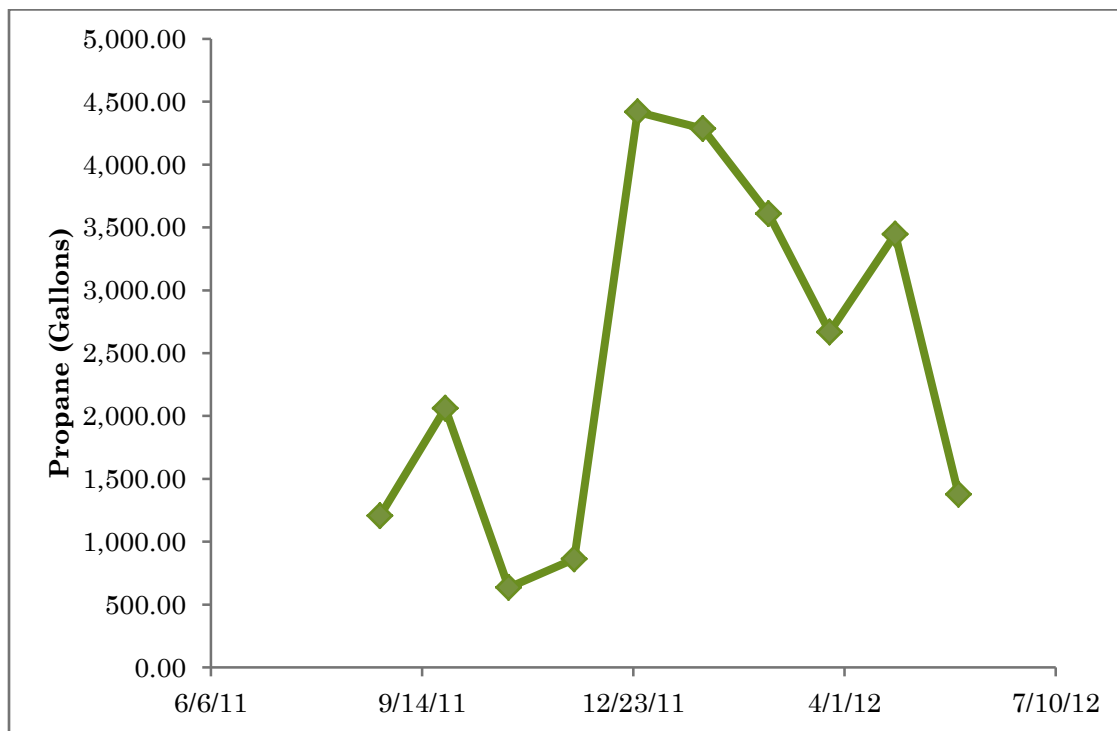
Water Consumption

Due to the fact that Mast Way Elementary's water is extracted from a well, its averages and patterns of consumption are not included in this report.

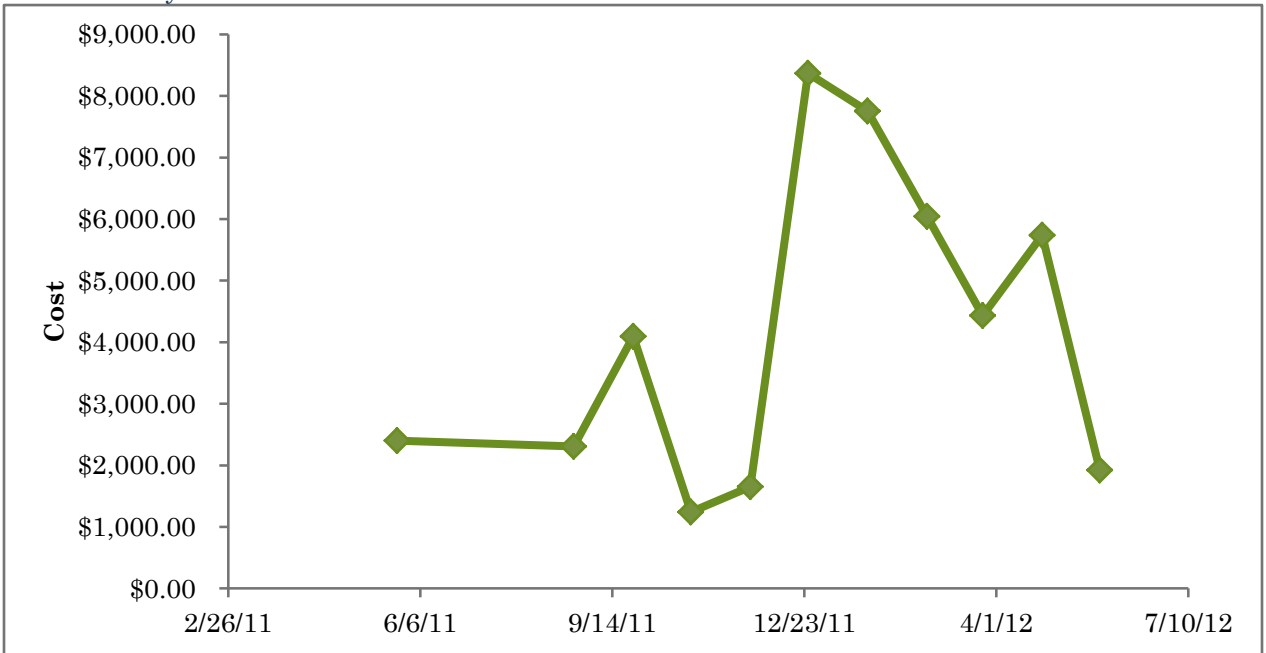
Energy

| Utility Data: Mast Way | |
|------------------------|-------------|
| Propane: Gallons | 24,561.50 |
| Cost | \$43,562.17 |

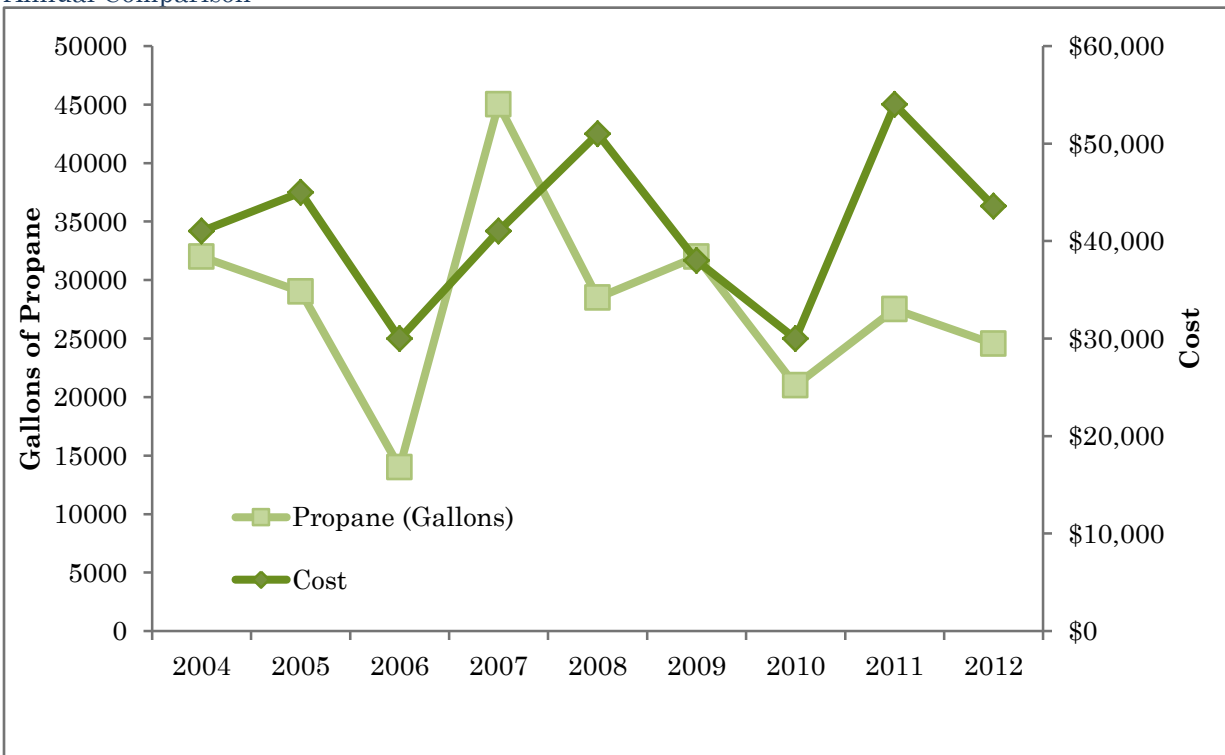
Total Monthly Usage



Total Monthly Cost



Annual Comparison

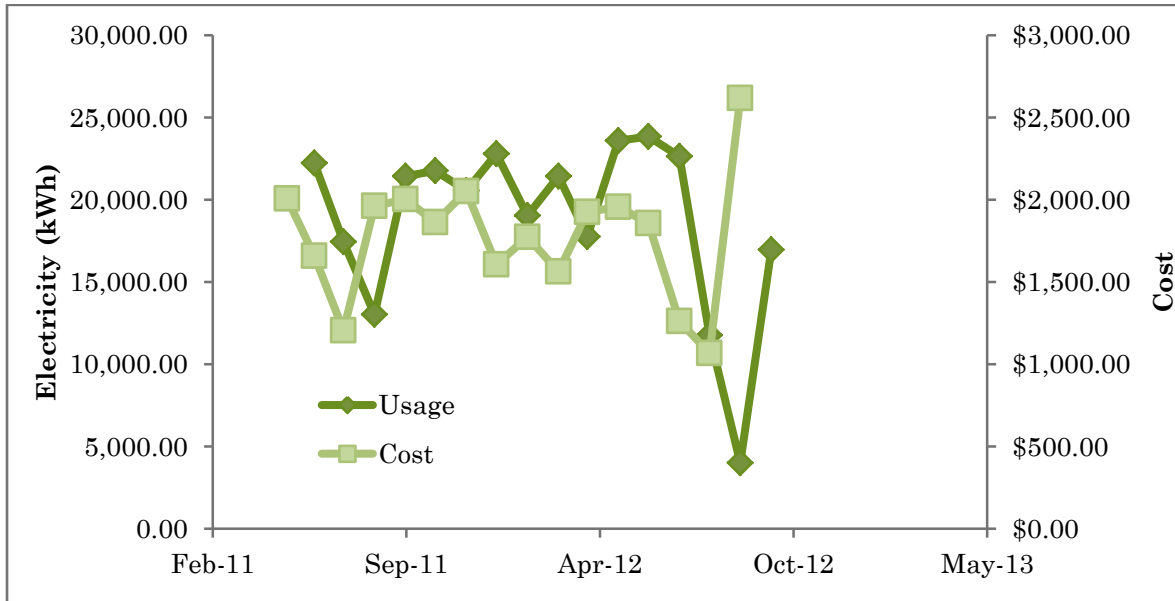


Electricity

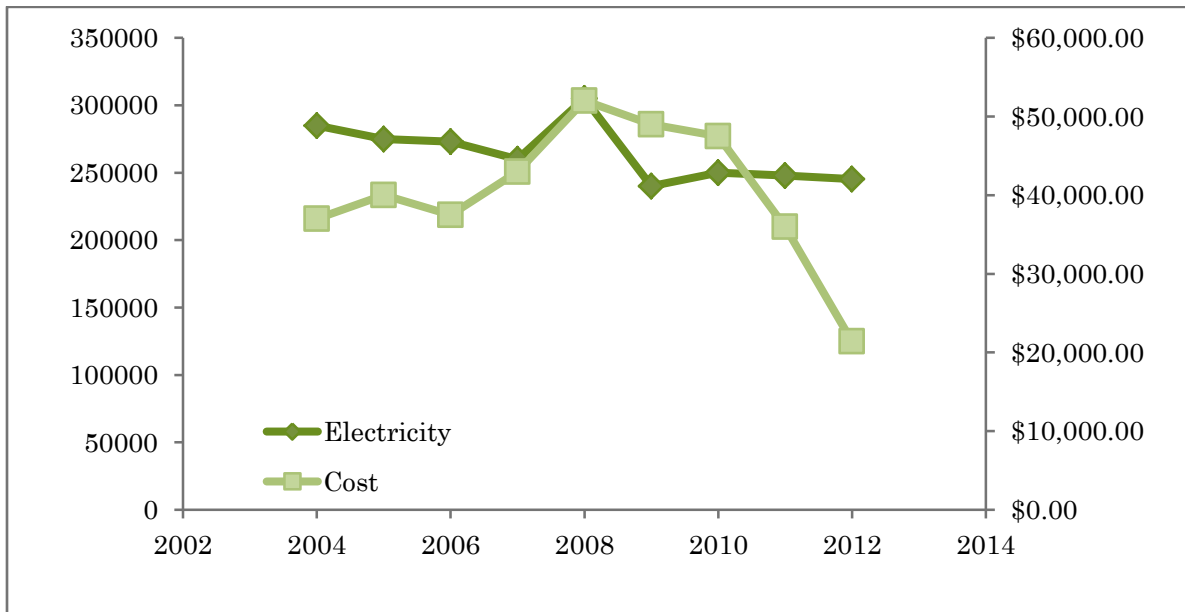
Electricity: Mast Way

| | |
|--------------------|-------------|
| Usage (kWh) | 245,360 |
| Cost | \$21,434.26 |

Total Monthly Use and Cost



Annual Comparison



MOHARIMET ELEMENTARY

Solid Waste and Recycling

| Cost | Percent Change from Previous Year |
|------------|-----------------------------------|
| \$6,409.84 | (79.7%) |

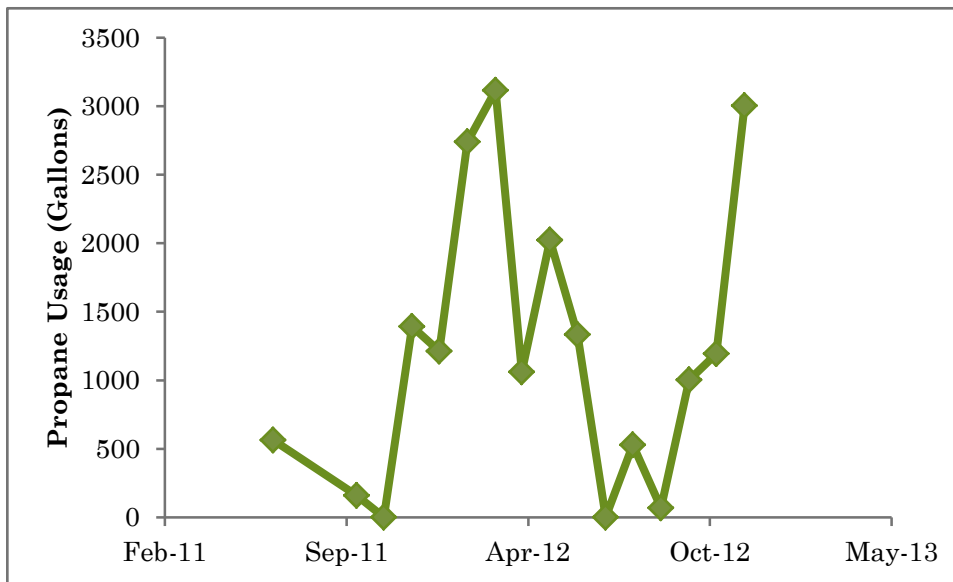
Water Consumption

Due to the fact that Mast Way Elementary's water is extracted from a well, its averages and patterns of consumption are not included in this report.

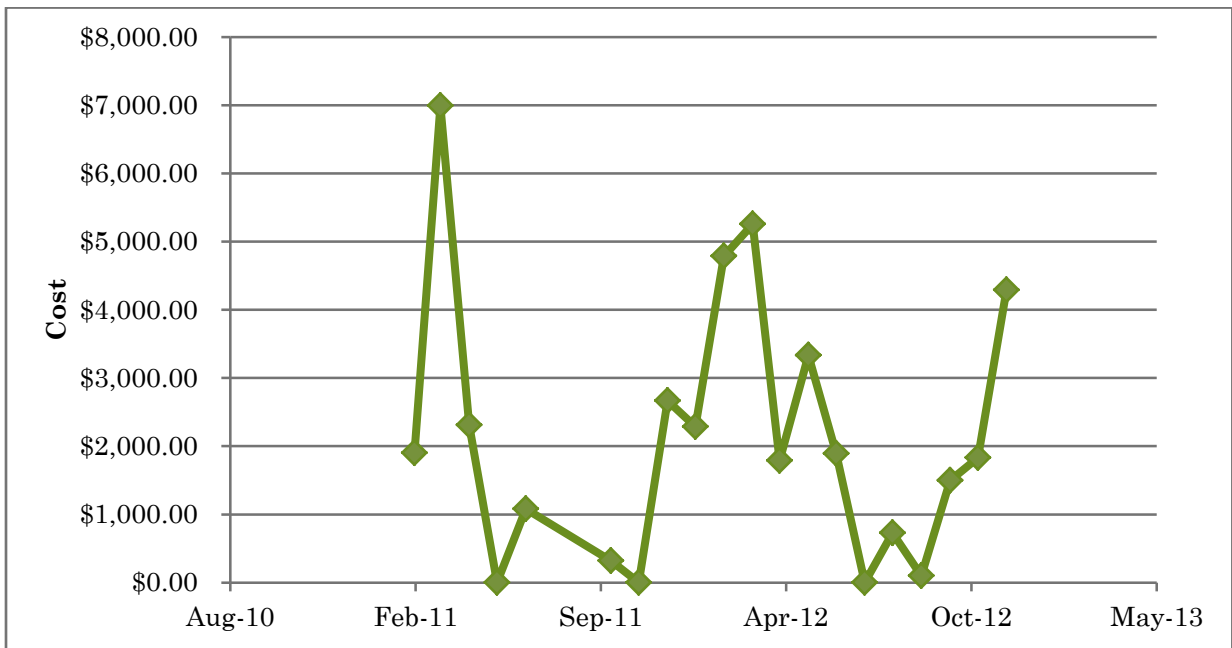
Energy

| Utility Data: Mast Way | |
|------------------------|-------------|
| Propane: Gallons | 14,131.40 |
| Cost | \$24,137.57 |

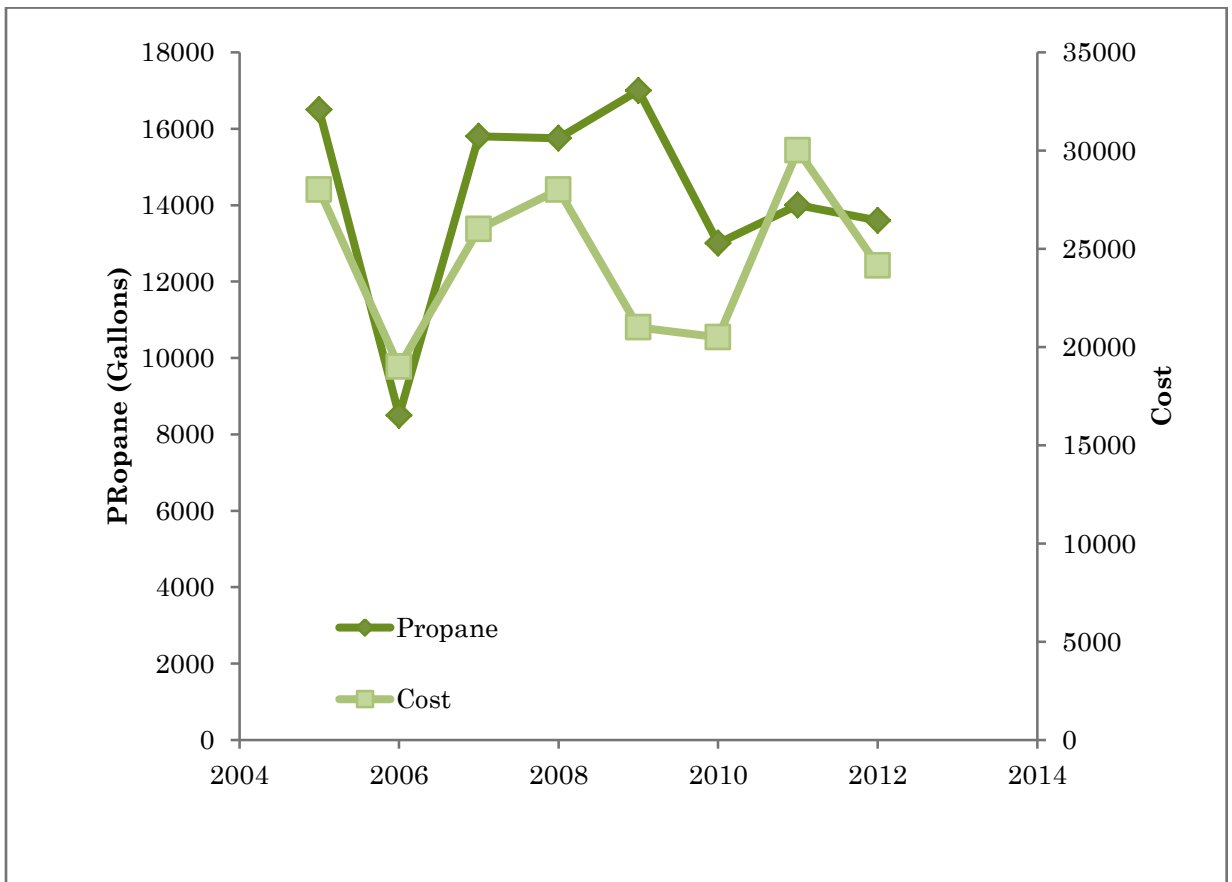
Total Monthly Use



Total Monthly Cost



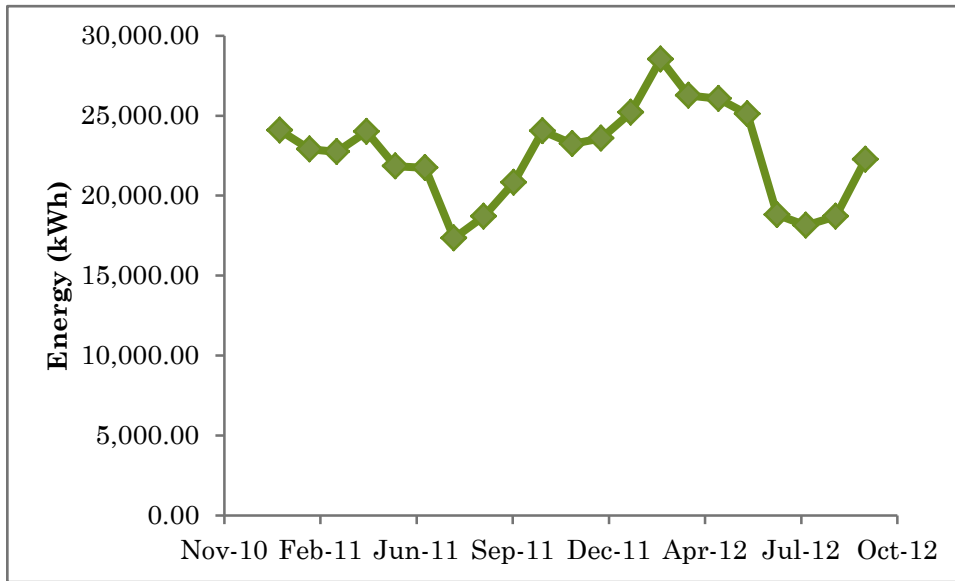
Annual Comparison



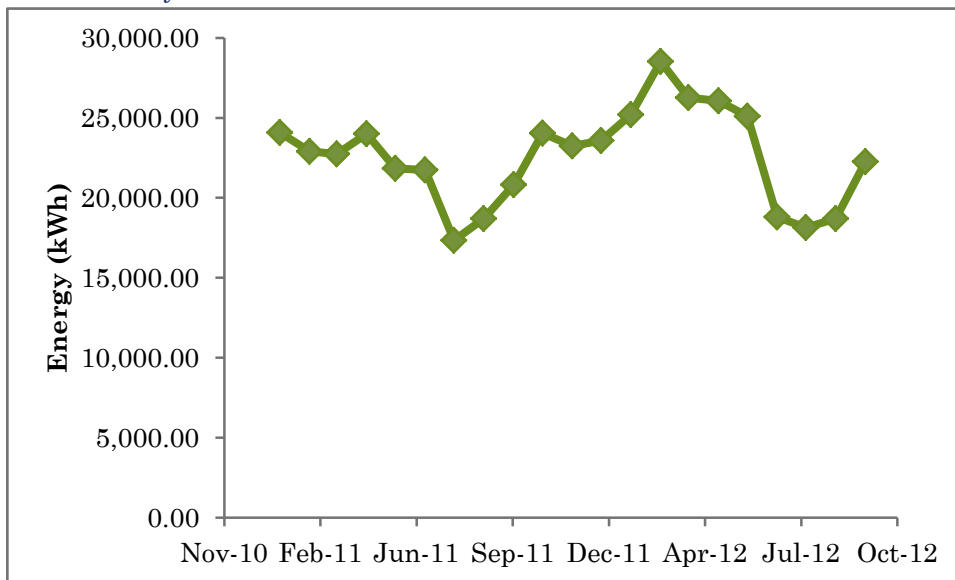
Electricity

| Electricity: Moharimet Elementary | |
|-----------------------------------|----------|
| Usage (kWh) | 277,630 |
| Cost | \$45,697 |

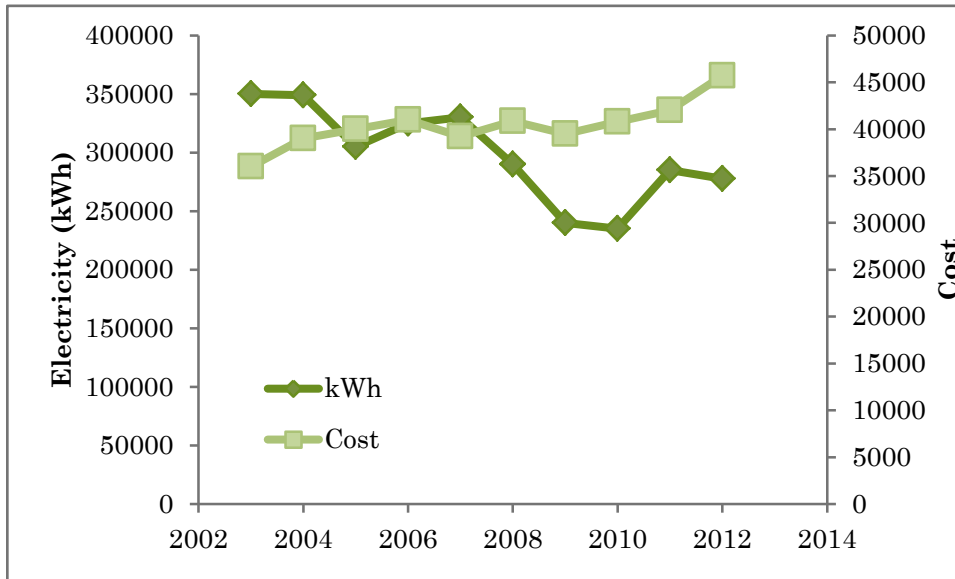
Total Monthly Usage



Total Monthly Cost



Annual Comparison



OYSTER RIVER MIDDLE SCHOOL

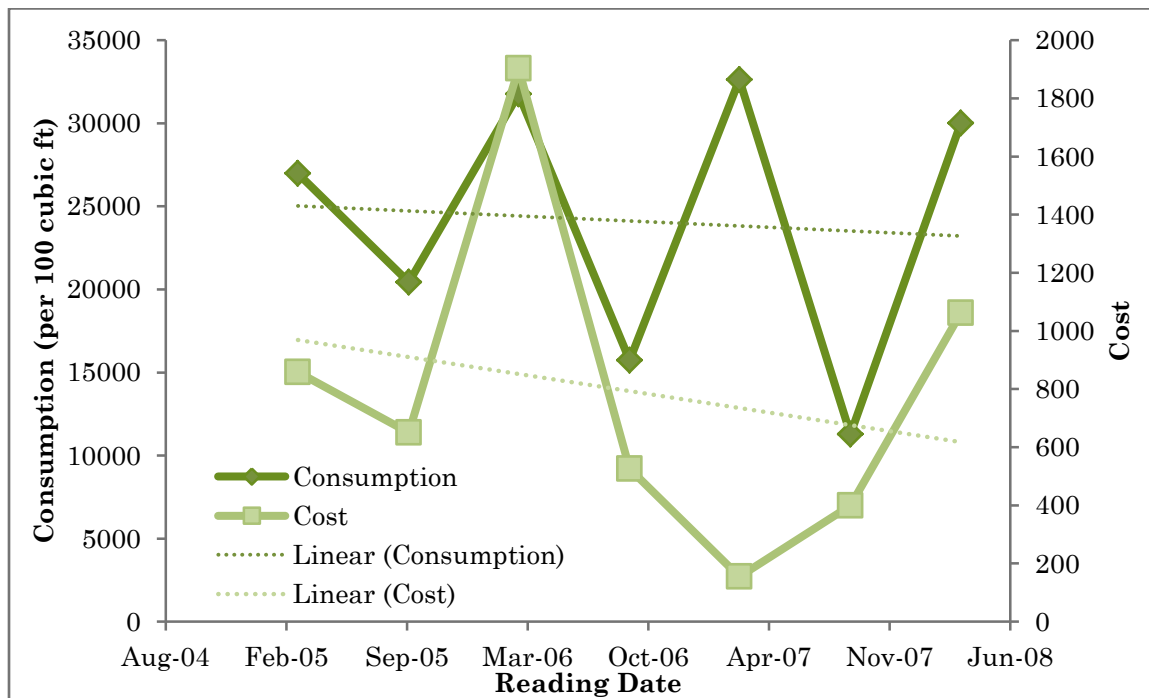
Solid Waste and Recycling

| Cost | Percent Change from Previous Year |
|------------|-----------------------------------|
| \$5,424.14 | 44.3% |

Water Consumption

| Annual Water Consumption: Middle School | |
|---|------------|
| Usage (per 100 cubic feet) | 91,000 |
| Cost | \$3,221.40 |

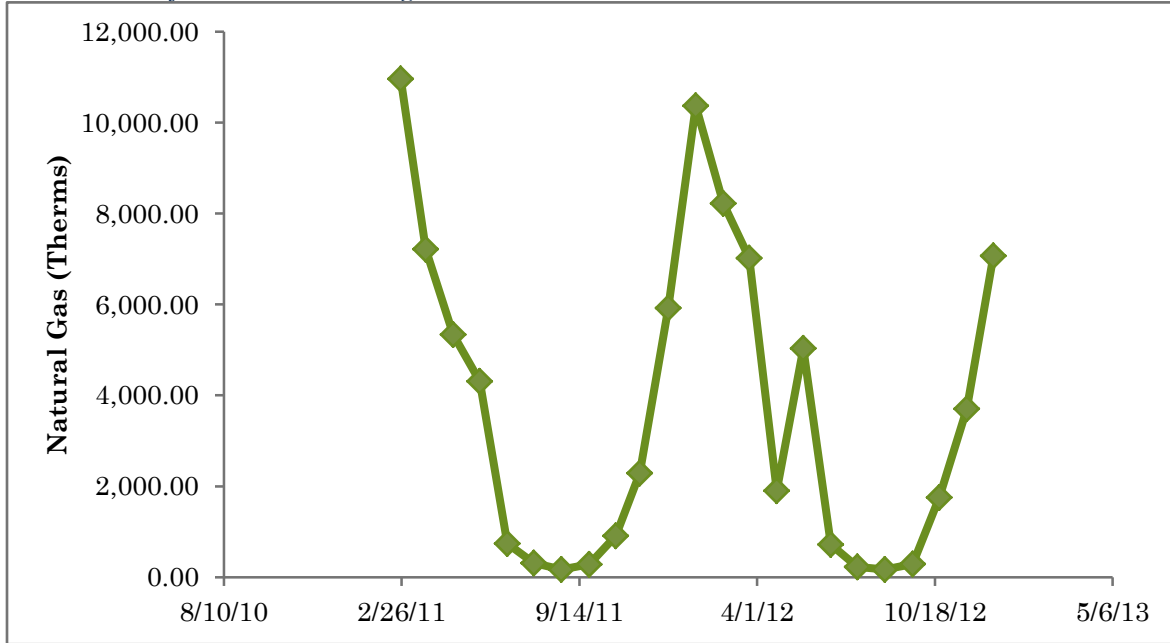
Total Monthly Water Consumption and Cost



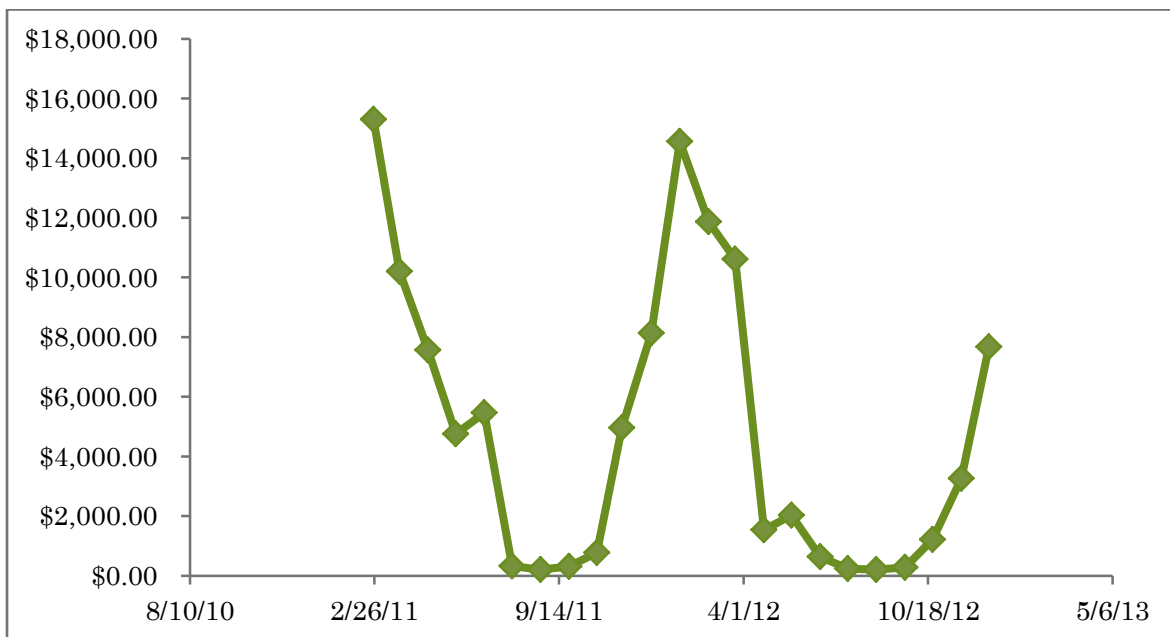
Energy

| | |
|------------------------------|----------|
| Energy: Middle School | |
| Natural Gas (Therms) | 43,154 |
| Cost | \$61,389 |

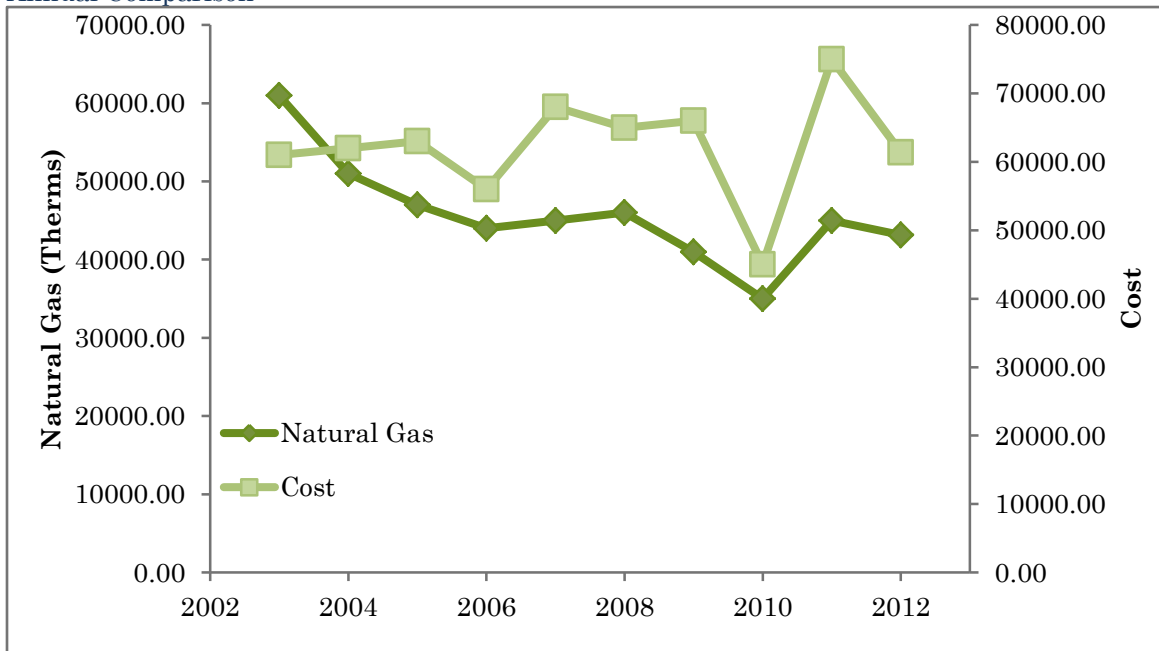
Total Monthly Natural Gas Usage



Total Monthly Cost



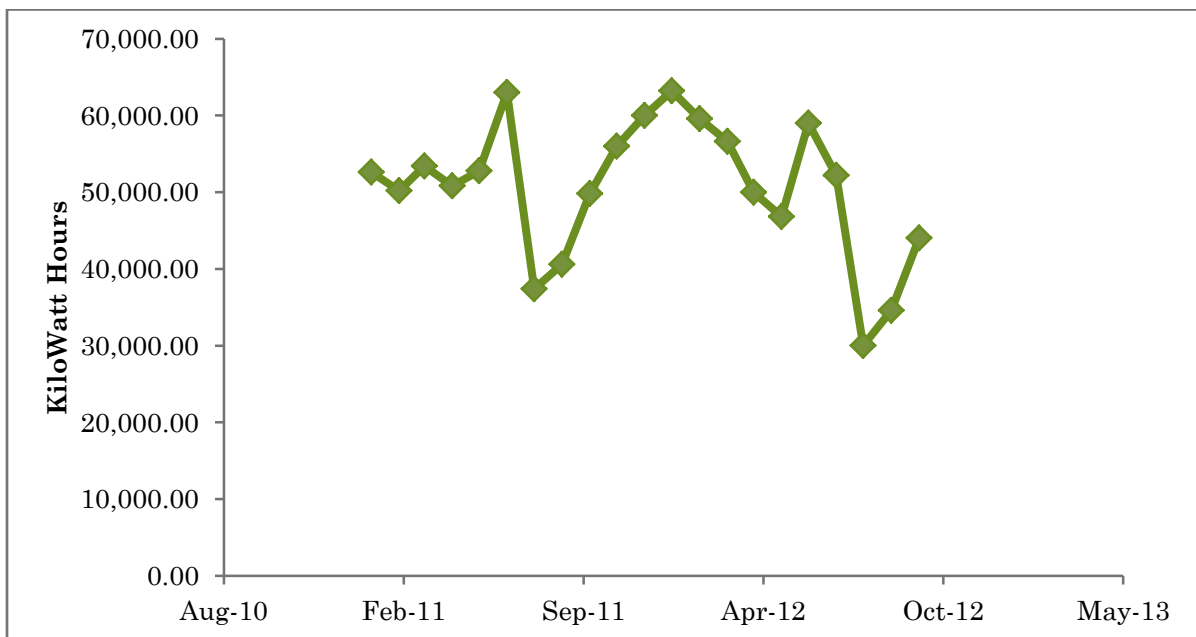
Annual Comparison



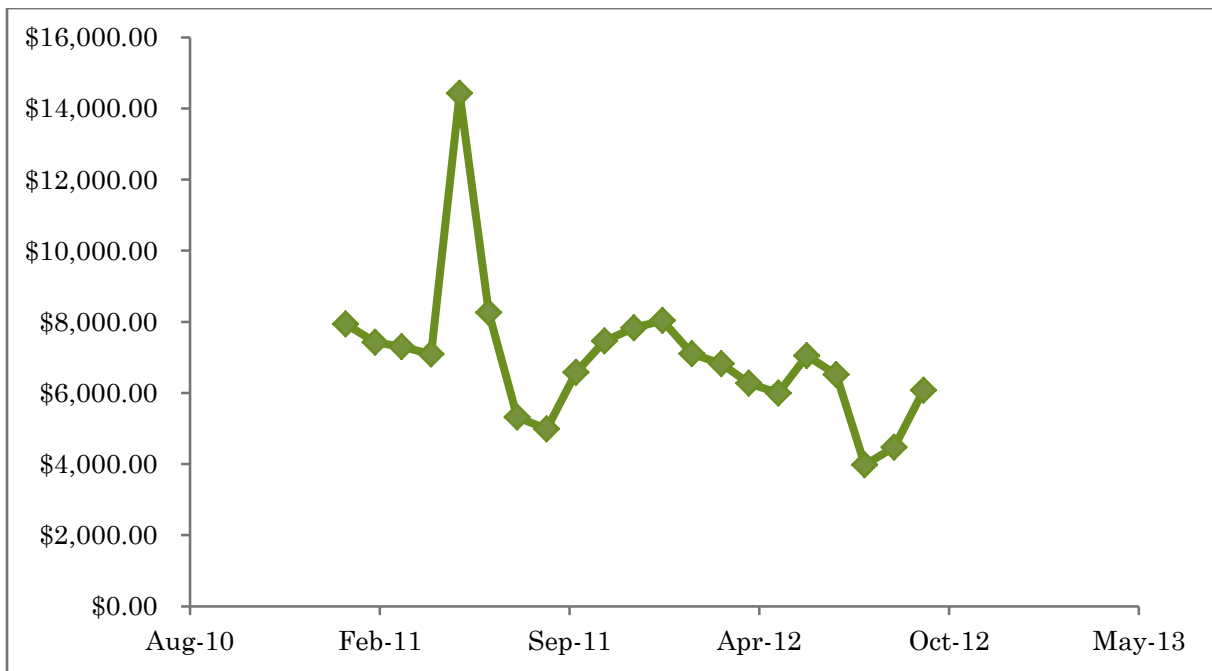
Electricity

| Electricity: Middle School | |
|----------------------------|-------------|
| Usage (kWh) | 631,200 |
| Cost | \$79,961.38 |

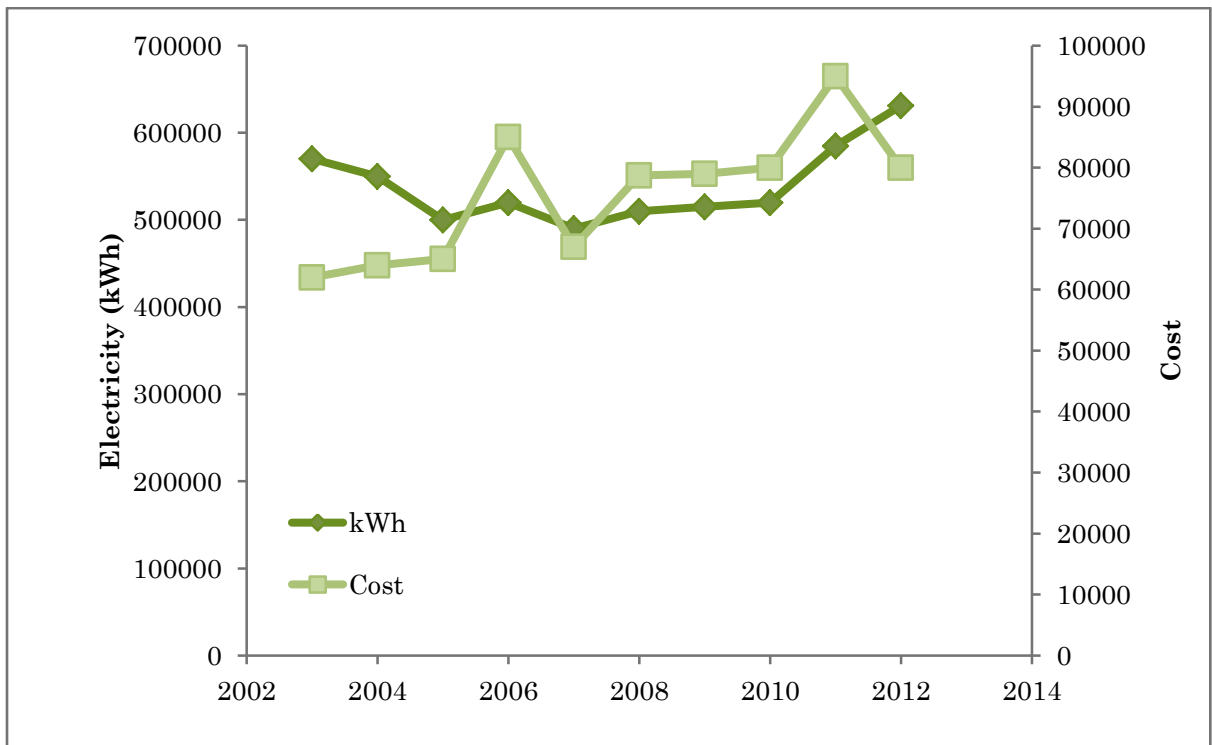
Total Monthly Electricity Usage



Total Monthly Electricity Cost



Annual Comparison



OYSTER RIVER HIGH SCHOOL

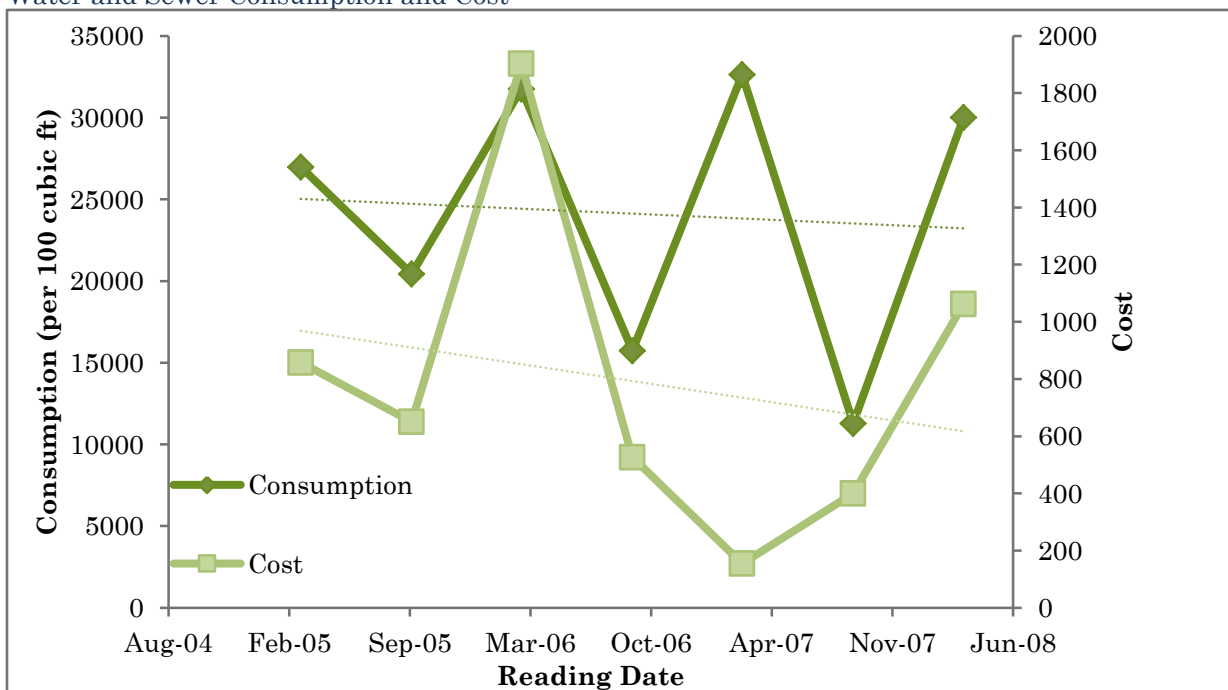
Solid Waste and Recycling

| Cost | Percent Change from Previous Year |
|------------|-----------------------------------|
| \$7,484.66 | 19.6% |

Water Consumption

| Annual Water Consumption: High School | |
|---------------------------------------|------------|
| Usage (per 100 cubic feet) | 104,232.80 |
| Cost | \$3,638.00 |

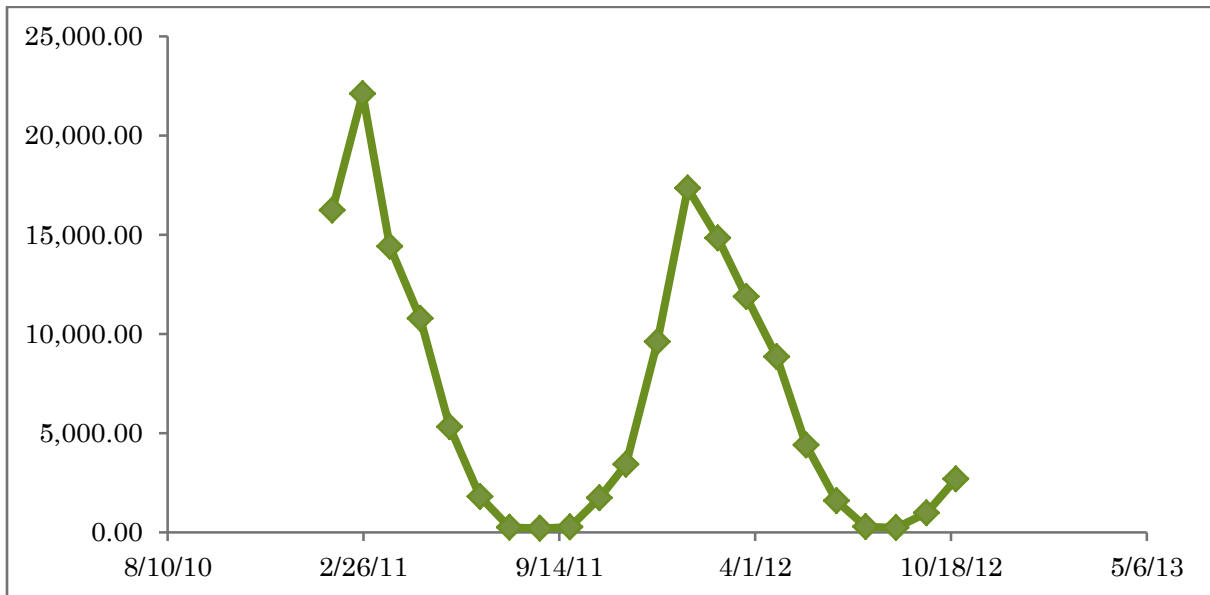
Water and Sewer Consumption and Cost



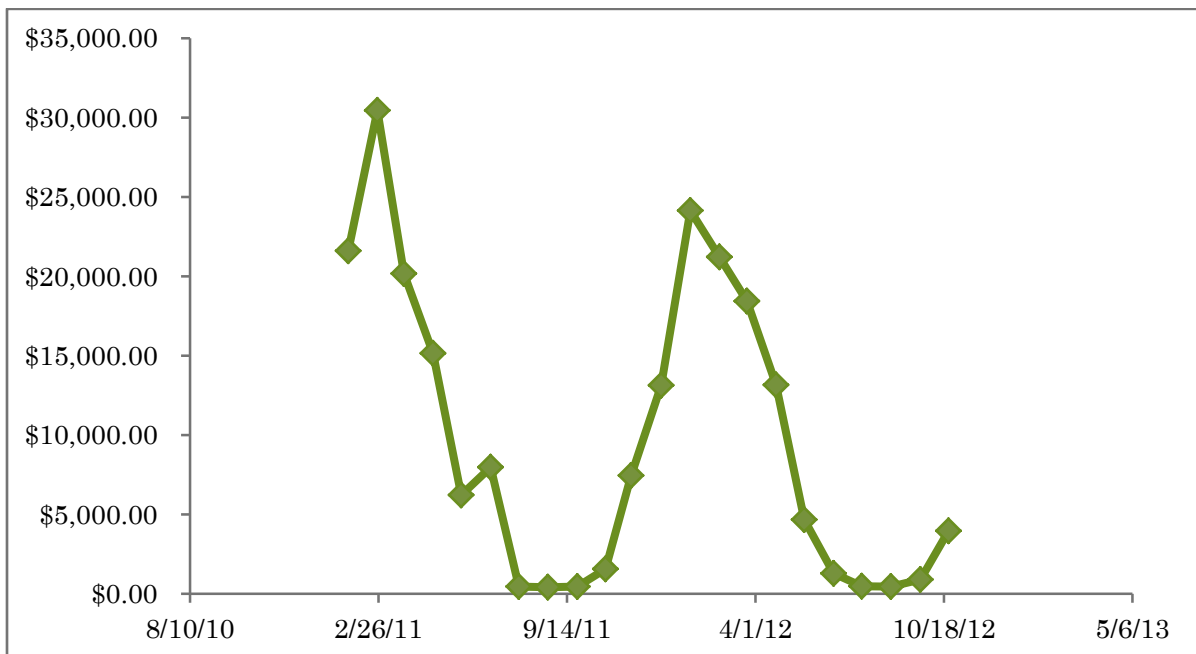
Energy

| | |
|-----------------------------|--------------|
| Energy: High School | |
| Natural Gas (Therms) | 74,327.29 |
| Cost | \$106,407.35 |

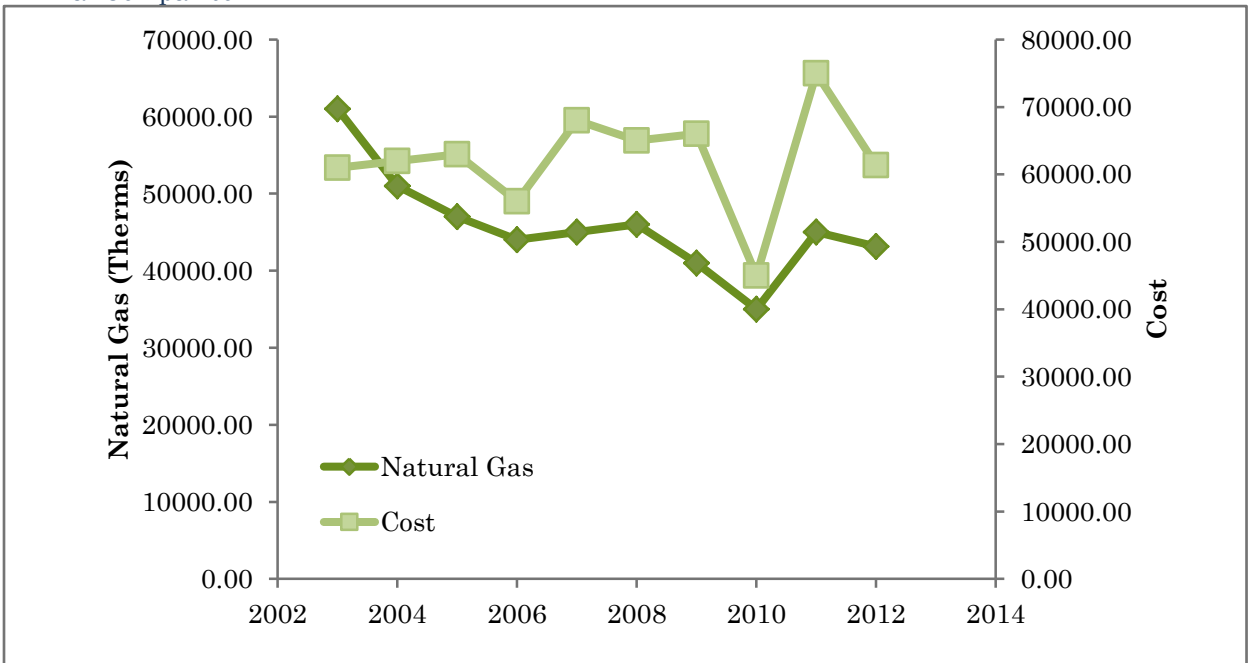
Total Monthly Natural Gas Consumption



Total Monthly Natural Gas Cost



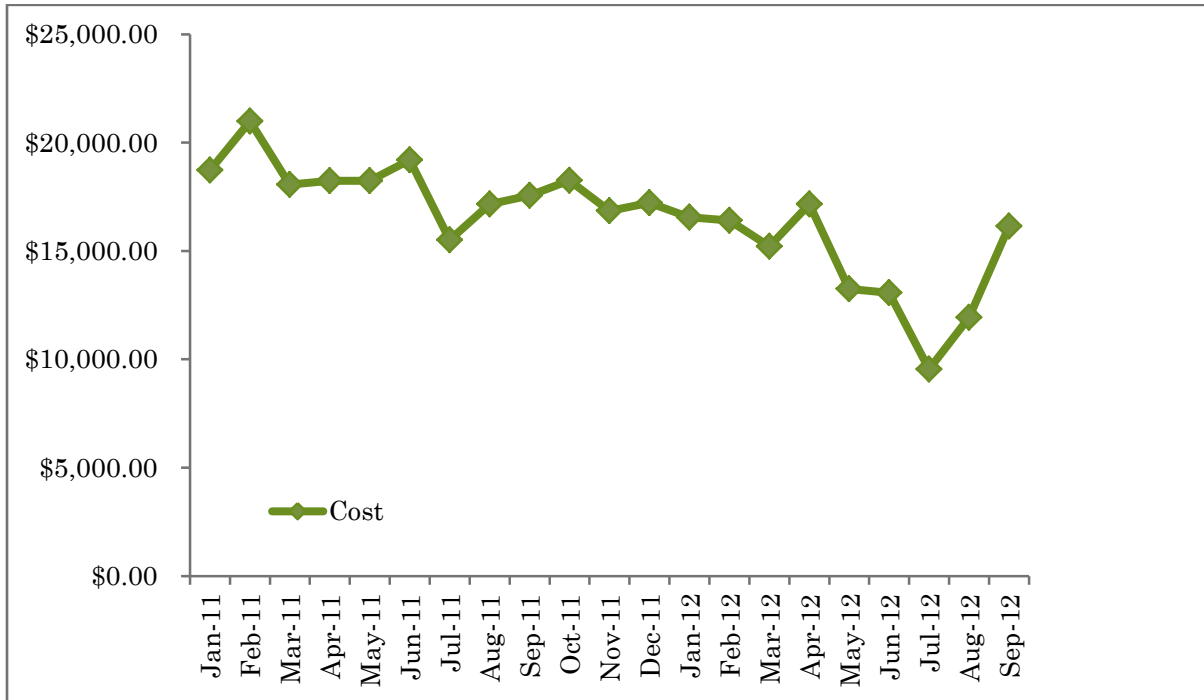
Annual Comparison



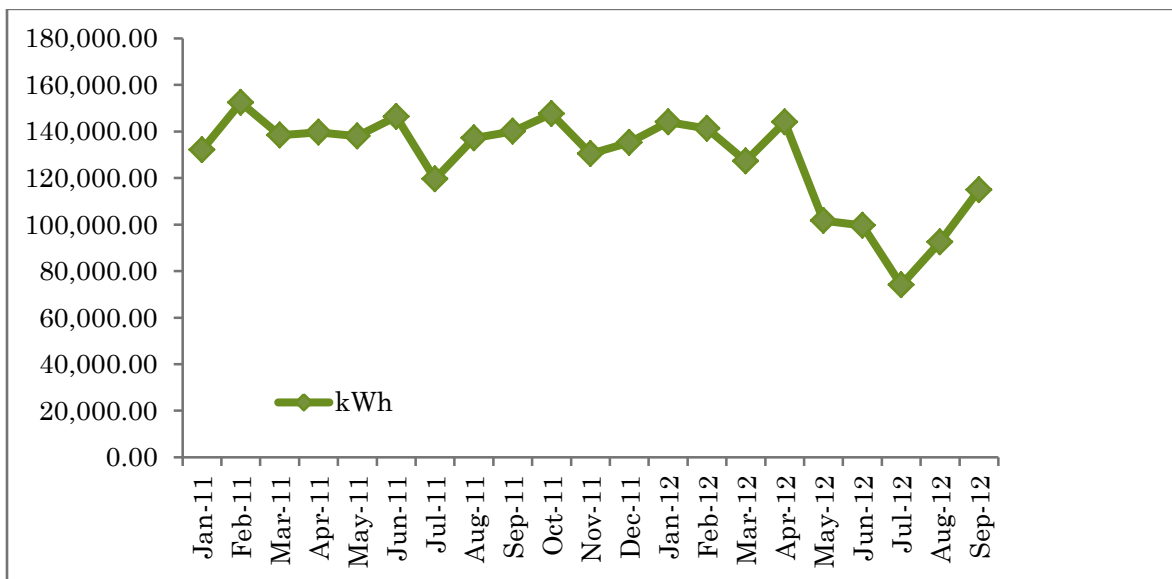
Electricity

| Electricity: High School | |
|--------------------------|--------------|
| Usage (kWh) | 1,614,400.40 |
| Cost | \$200,359.71 |

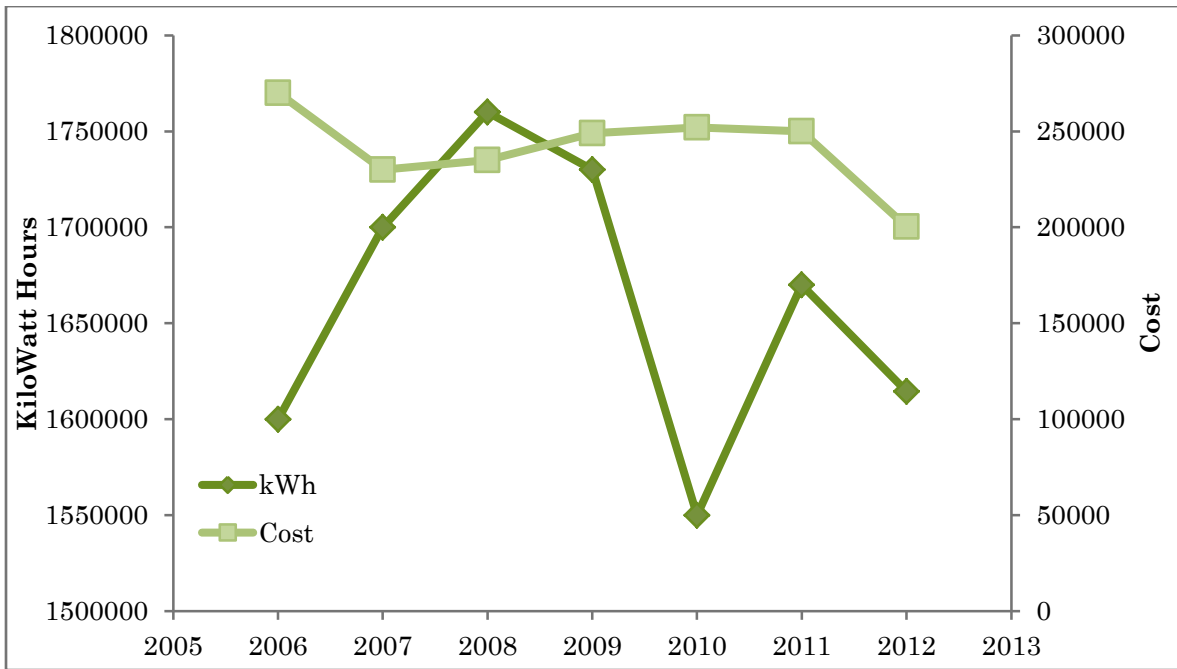
Total Monthly Electricity Cost



Total Monthly Electricity Consumption



Annual Comparison





PART III. NOTED IMPROVEMENTS, RECOMMENDATIONS,
APPENDICES

Noted Improvements

Overall, since FY 2010-2011, the entire district has reduced its carbon footprint by 5%. Although in some areas (waste and water) there were increases in operating costs and consumption, in general there were huge improvements in operations within the district. Compared to FY 2010-2011, electricity costs in the district were reduced by 35%. The Middle School saw the largest drop costs, by 50%, closely followed by Moharimet (49% reduction) and Mast Way (38% Reduction). Even the lowest reduction in electricity costs was large, 20%, in the High School. Both gas and propane costs were reduced as well. Natural gas costs dropped by 16% in the Middle School and 14% in the High School. As for propane, costs dropped by 17% in both elementary schools. Fleet upkeep costs dropped by 10% in the entire district.

The drop in carbon emissions is equivalent to the amount sequestered by 181 acres of forest!

Recommendations for ORCSD

Utilize the FY2011-2012 Ecological Footprint as a tool to identify strengths, weaknesses and opportunities within the water, electricity, transportation, energy, paper, and solid waste sectors within the district. Suggested areas of focus include:

1. Given that the cost of solid waste and recycling disposal increased so significantly from FY 2010-2011, the new waste disposal system for FY 2012-2013 should be monitored closely for cost and effectiveness.
2. The cost of water and sewage in the Middle School is significantly higher per pupil than in the High School. The causes behind this discrepancy should be investigated further in order to determine where changes should be made.
3. Identify additional key points that hydration stations may be successful in. So far the installed ones have saved over 86,200 bottles from landfills (and counting!) – and from our waste expenditures. Additions may lead to exponential growth in water bottle savings and trash/recycling reduction.

Recommendations for Further Reports

1. Record missing data measurements: solid waste and recycling tonnage, sustainability initiative investment costs and repayment periods.
2. Determine more effective ways of monitoring and documenting paper usage in district.
3. Document local food purchases.

Appendix A: Calculations and Sources

The following measurements were used for the calculations in this report as cited by the Environmental Protection Agency's (EPA) Greenhouse Gas Equivalencies Calculator (found at: <http://www.epa.gov/cleanenergy/energy-resources/calculator.html>):

- Electricity: KiloWatt Hours (kWh):

6.8956×10^{-4} metric tons CO₂ / kWh

- Transportation Fleet: Gallons of Gasoline

$0.125 \text{ mmbtu/gallon} * 71.35 \text{ kg CO}_2/\text{mmbtu} * 1 \text{ metric ton}/1,000 \text{ kg} = 8.92 * 10^{-3}$ metric tons CO₂/gallon of gasoline

- Energy

- Natural Gas (Therms)

$0.1 \text{ mmbtu}/1 \text{ therm} * 14.47 \text{ kg C}/\text{mmbtu} * 44 \text{ g CO}_2/12 \text{ g C} * 1 \text{ metric ton}/1000 \text{ kg} = 0.005$ metric tons CO₂/therm

- Propane (Gallons)

12.8 pounds CO₂/Gallon propane * 2204.62 pounds CO₂/ MTCO₂E

Appendix B: Final Ecological Footprint Scorecard

| Categories | | Description | Measurement | 2011-2012 |
|--|--------------------|--|--------------------------|--------------|
| Waste and Recycling | | Price: based on tonnage collected | Cost | \$25,640.75 |
| Transportation Fleet | | Total buses: 40 | Gallons (gasoline) | |
| | | | Maintenance Costs | \$182,084.90 |
| | | | MTCO ₂ E | 533 |
| Water Consumption | | Recorded twice each year (omitting Mast Way and Moharimet Elementary well systems) | per 100 cubic feet | 132296 |
| | | | Cost | \$7,382.00 |
| Electricity | | All schools & facilities | kWh | |
| | | | Cost | \$293,187.97 |
| | | | MTCO ₂ E | 1,885 |
| Energy | Natural Gas | High School Middle School | Therms (per consumption) | 117481.29 |
| | | | Cost | \$167,796.40 |
| | | | MTCO ₂ E | 1,188 |
| | Propane | Mast Way Elementary Moharimet Elementary | Gallons (on demand) | 38692.9 |
| | | | Cost | 67,699.74 |
| | | | MTCO ₂ E | 247.62 |
| Total Metric Tons of CO₂ Equivalent (Energy & Electricity) | | All schools | MTCO ₂ E | 3,853.62 |
| Total Costs | | All sectors (variables included are not consistent with every fiscal school year) | Cost (\$) | \$743,792 |